

Accessories



100919 - TMT Flow Switch
New higher flow industrial flow switch, in stainless steel.



100918 - TMT Flow Switch
New higher flow industrial flow switch, in brass.



100869C - 100870C - Waterbroom Assemblies
Available in 12" and 16".



ZK3608SS - Trapped Pressure Unloader
3600 PSI Stainless Steel.



ZK5810 - Trapped Pressure Unloader
2.11 - 10.6 GPM 5800 PSI.



ZK1 - Unloader
3600 PSI
Available with 3/8" outlet.



100874 - Injector New Stainless Steel Chemical Injectors.



100906 - Chemical Pulse Pump
Perfect for carpet cleaning.



YG5000C - Popular YG5000 spray gun with ceramic ball for chlorine applications.



YG1635S - 16 GPM
New washdown gun with swivel.



DL18FWRD/DL18FWBL/DL18FWBK
New flexible wands available in 3 colors!



DLTG12/DLTG18/DLTG24
Telescoping wands available in 12', 18', and 24' sizes.

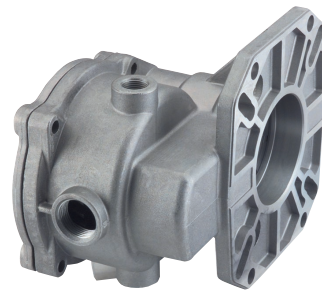


D30006
Expanded hose reel line now available in 50', 100', 150' and 200' sizes.



GP Companies, Inc.
1174 Northland Drive
Mendota Heights, MN 55120

888.474.5487
www.generalpump.com
e.mail: sales@gpcompanies.com



YGR1000P - Gearbox, B24, 24HP, 1"
Improved, higher HP gear boxes for more industrial applications.

Emperor

Pumps That Rule Any Environment

The New Emperor Line Of Pumps With HT Technology

**Harsh.
Dry.
Barren.**



GENERAL PUMP

We Call It Home.

Now your equipment will work in the toughest of environments with the new Emperor line of pumps with HT Technology. The Emperor line features "High Tech" packing and "High Temp" valve design. These premium pumps can withstand temperatures up to 185°F and can run dry for several hours. The nickel-plated manifold and valve plugs provide corrosion-resistant operation and help reduce damage caused by cavitation. Choose from a variety of different size pumps for self-service, full-service and rollover car washers:

HTS Series

HTS Series (47HT) - Specifically designed to handle the rigorous duty cycles, high temperatures and chemicals associated with self-service car wash applications. Also ideal for use in carpet cleaning and other high pressure cleaning applications.

Model Number	RPM	GPM	PSI
HTS2210S	950/1450	2.6/4.0	2300
HTS2212S	950/1450	3.2/4.75	2300
HTS2215S*	950/1200	4.0/5.0	2300

*Same RPM and flow as Cat 310/5CP2120



HTW Series

HTW Series (69HT) - Designed for touchless carwash systems, multiple gun systems and industrial plant systems where hot water is required.

Model Number	RPM	GPM	PSI
HTW3624S	1000	18.0	1200



HTW Series

HTW Series (76HT) - Designed for use in tunnel/conveyor applications. Also perfect for use in industrial plant systems where hot water is required.

Model Number	RPM	GPM	PSI
HTW3628S	1000	21.0	1500



HTX Series

HTX Series (63HT) - Specifically designed to handle the rigorous duty cycles, high temperatures and chemicals associated with self-service car wash applications. Also ideal for use in carpet cleaning and other high pressure cleaning applications. This pump offers a compact and economical design.

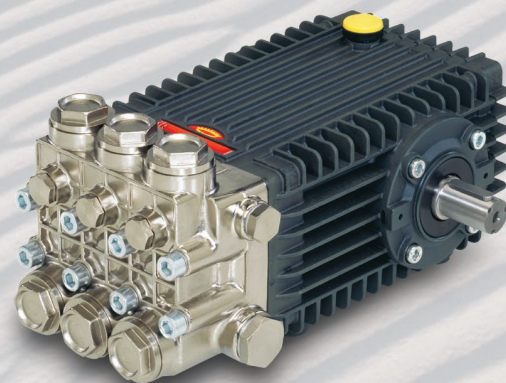
Model Number	RPM	GPM	PSI
HTX1810S	1450/1750	2.7/3.1	2000
HTX1812S	1450/1750	3.2/3.8	2000
HTX1813S	1450	3.5	2500



HTF Series

HTF Series (66HT) - Designed for use in prep units, conveyor and multiple gun applications. Excellent for carpet cleaning and for use in industrial plant systems where hot water is required.

Model Number	RPM	GPM	PSI
HTF2018S	950/1200/1750	4.0/5.0/7.5	3600
HTF2221S	1450/1750	8.5/10.2	3000
HTF2421S	1450/1750	10.0/12.0	3000/2500



To find out more about the complete line of Emperor pumps contact General Pump today.

GENERAL PUMP
888.474.5487
www.generalpump.com

The Emperor Line Of Pumps With HT Technology Provides:

High Temperature/Run Dry Seal Capability (Patent Pending)

- dynamic low-pressure seal retainer
 - aligns to crankcase
 - taper area reduces friction between retainer and ceramic plunger and allows for better drainage
- superior low-pressure seal
 - proprietary compound of teflon (PTFE) and graphite
 - stainless steel spring energized
 - u-seal
- innovative intermediate ring
 - raised area fills some of the space of the low-pressure seal, which helps it energize faster in suction conditions
- superior high-pressure seal
 - proprietary compound of teflon (PTFE) and graphite
 - stainless steel spring energized
 - seal



Inlet/Outlet Valve Seal (Patent Pending)

- teflon bronze support
- special o-ring
 - o-ring shape on inside and outside diameter to make installation easier
 - flat surface on top and bottom
 - NBR90



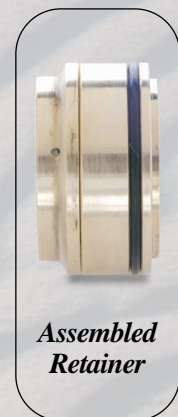
Inlet/Outlet Valve Cage (Patent Pending)

- 6 post design
 - stronger
- new "high temp" plastic



Nickel-Plated Inlet/Outlet Valve Plugs

- offers better corrosion protection
- twice as thick as competitors
- harder



Assembled Retainer