

**GENERAL PUMP** *A member of the Interpump Group*

# DHRTM50200

## Trailer Mounted Hose Reel

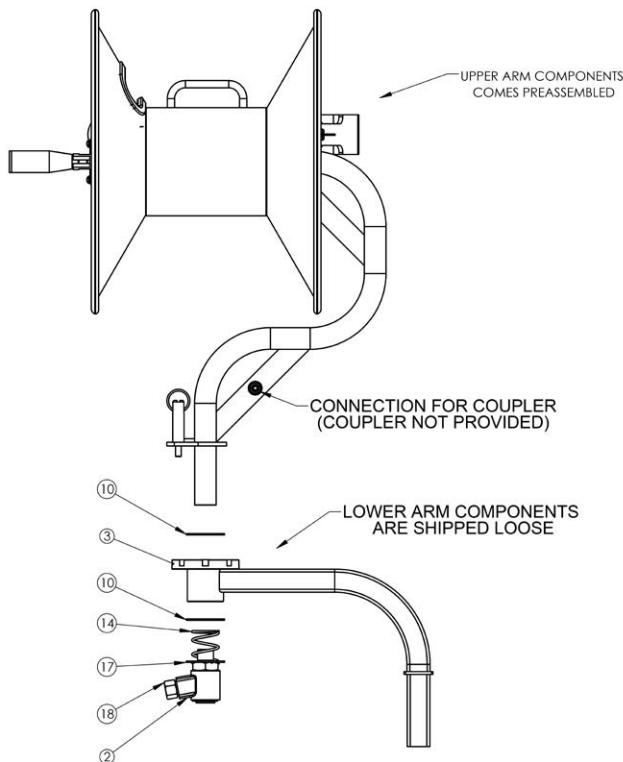
### SPECIFICATIONS

PART NUMBER	DHRTM50200
3/8" Hose Capacity	200 ft.
Pressure Rating	5,000 PSI
Inlet	1/2" NPT-F
Outlet	1/2" NPT-F
Max. Temp	250° F

### FEATURES / BENEFITS

- Direct hand-crank rewind with locking pin
- Solid steel construction
- Durable powdercoated finish
- 360° swivel rotation
- Robust folding handle
- 180° pivoting hose guide
- Adjustable friction lever brake
- Full flow high pressure stainless steel swivels
- Coupler connection to secure hose when not in use

### ASSEMBLY INSTRUCTIONS



1. Slide washer [Item 10] over the shaft of the upper arm assembly.
2. Insert the shaft onto the lower arm.
3. Assemble the remaining components with the layout shown. Use a thread sealant (not provided) designed for locking and sealing of metal pipes (e.g. LOCTITE 263, 542, 545 & 577) on the inlet threads of the swivel.
4. Attach inlet hose to the swivel on the lower arm assembly.
5. Attach the outlet hose to the swivel on the upper arm assembly then secure to hose clamp (Item 6).
6. Route the opposite end of the hose through the openings in the flange and hose guide.
5. The hose reel is ready for operation.



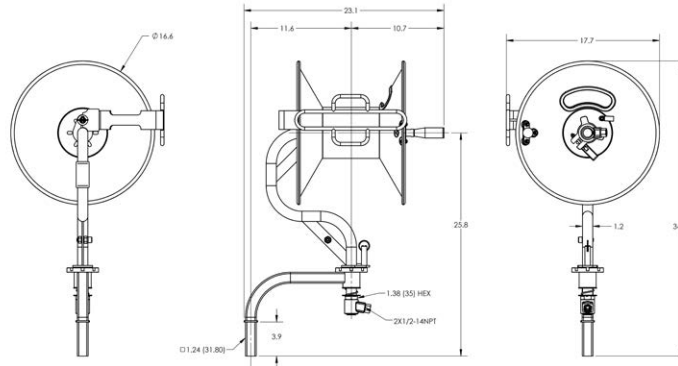
General Pump  
is a member of  
the Interpump Group



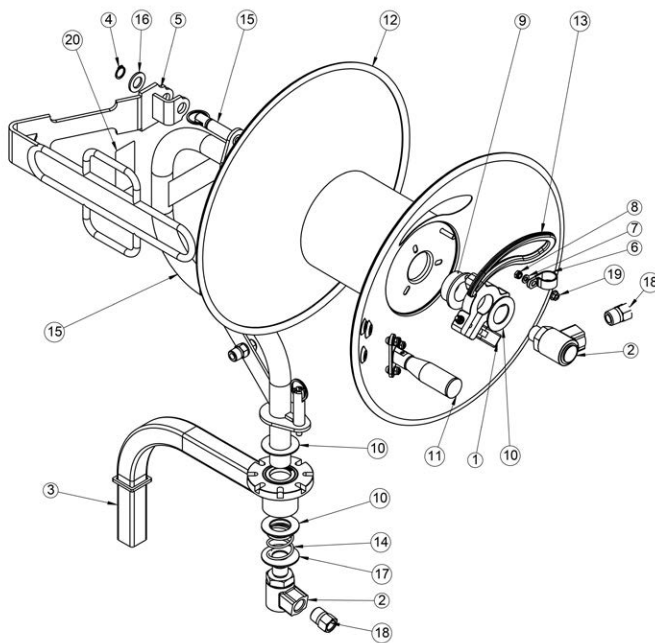
Ref 301026 Rev D  
09-20



**DIMENSIONS (inches[mm])**



**PARTS LIST**



Item No.	Part No.	Description	Qty.
1	2103408	BRAKE KIT, 30MM	1
2	2103406	SS SWIVEL 10° OFFSET, M22X1/2NPT-F, 5000PSI	2
3	2103405	ARM KIT, LOWER	1
4	2200151	SS SNAP RING, 16	1
5	2560007	GUIDE, HOSE	1
6	2540078	CLAMP, HOSE	1
7	2200018	WASHER, M6	2
8	2200026	NUT, NYLOK, M6	2
9	2660380	BUSHING	2
10	2203423	WASHER	4
11	2103407	HANDLE KIT, 30 DEGREES	1
12	2103370	ASSY, FLANGE	1
13	2660338	GUARD, HOSE	1
14	2720037	SPRING	1
15	2103404	ARM KIT, UPPER	1
16	2203400	ASHER, M16	1
17	2203430	WASHER, 53X23X2	1
18	2530112	FITTING, 1/2NPT-MX 3/8NPT-F	2
19	2200154	FLANGE NUT, M6, SS	1
20	2400178	LABEL, CAUTION SURFACE MAY BE HOT	1
OPTL	2103249	SWIVEL REPAIR KIT	

**SAFETY PRECAUTIONS**

1. Make sure incoming pressure does not exceed the rated pressure.
2. Use proper eye protection when assembling and using the hose reel.
3. Assemble the hose reel on a clean workbench free of debris and moisture.
4. Keep children away from work area.

**WARNING!**

*Exposure of skin directly to pressurized air or fluids could result in severe bodily injury!*

**OPTIONAL DHRUM UNIVERSAL MOUNTING KIT (sold separately)**

The DHRUM mounting kit can be used to mount your DHRTM50200 trailer mount hose reel to a wall or a wide range of portable pressure washer frames. The clamp system securely attaches to any round pipe or square tube frame up to 2" in size/diameter. The clamps grip to the frame to prevent slippage. The bracket consists of one powder-coat & rust-proof aluminum receiving socket, four galvanized steel clamps, and four stainless steel nuts and bolts.

MOUNT TO A WALL



HORIZONTAL PIPE MOUNT



VERTICAL PIPE MOUNT

