

## SPECIFICATIONS



Max BHP (Engine HP)	4 (5)
Max Engine RPM	3,500 RPM
Reduction Ratio	2.4:1
Max Pump Speed	1,450 RPM
Oil Capacity (SAE 90W hypoid gear lub)	5.5 oz.
Weight	4.5 lbs.
Fits Engine Shaft Diameter	3/4"
Max Shaft Extension	2-3/8"

Works with the following Pumps:

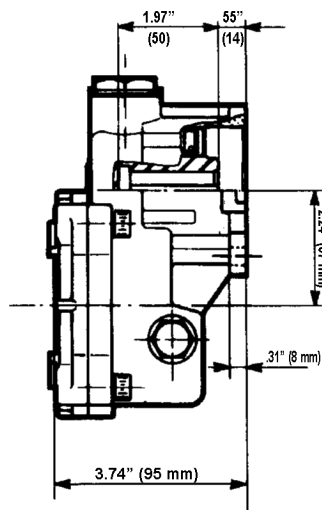
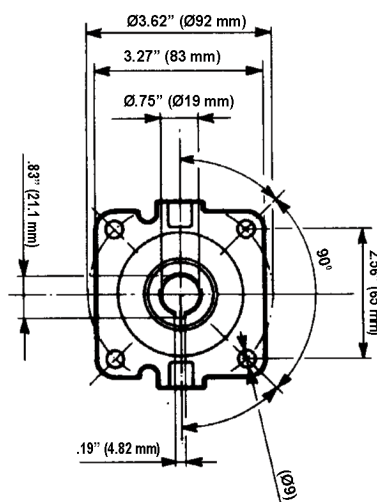
EP Series - 58, ME Series - 81, ET Series - 53, T Series - 51,  
TC Series - 60, TX Series - 63, EZ Series - 44

Note: This reducer fits engines with (4) 5/16-24 threaded holes on a 3.62 diameter bolt circle. See SAE specification J609A for additional information on engine mounting dimensions.

## FEATURES

- Eliminates need for belts and pulleys. Saves time and money.
- Compact design for easier enclosure. Reduced size of mounting base.
- Oversized bearing system is self-aligning. Reduces load on motor bearings and pump bearings.
- Large, helical cut, hardened steel gears for quiet, long life operation.
- Large capacity crankcase.
- Reversible mounting for right or left hand drive gas engines. Includes reversible dipstick and oil level sight glass.
- Model ZGR0750 fro 3/4" keyed shaft.

## DIMENSIONS



General Pump  
is a member of  
the Interpump Group



Ref 300122 Rev. G  
03-24

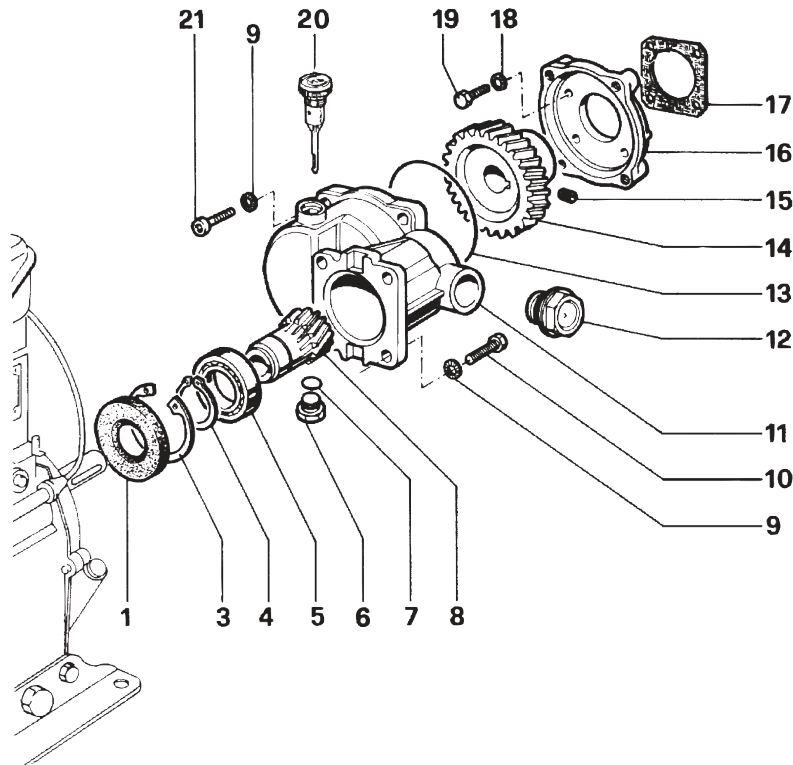


# ZGR0750

**GENERAL PUMP** *A member of the Interpump Group*

**Gear Reducer for Small Gas Engines**

## PARTS LIST



No.	Part No.	Description	Qty.
1	90167500	Oil Seal	1
3	90085000	Retaining Ring	1
4	90069500	Retaining Ring	1
5	91846400	Ball Bearing	1
6	98210000	Cap	1
7	90383300	O-ring	1
8	10020555	Pinion Gear	1
9	96701400	Washer	8
10	99274000	Screws	4
11	10020322	Reducer Box	1

No.	Part No.	Description	Qty.
12	97596800	Oil Level Indicator	1
13	940414100	O-ring	1
14	10020655	Ring Gear	1
15	99301700	Screw	1
16	10020422	Flange Adapter	1
17	10020784	Gasket	1
18	96693800	Washers	4
19	99188200	Screws	4
20	98210300	Oil dip Stick	1
21	99308400	Screws	4

## TORQUE SPECS\*

POS.	Nm	Ft/lb
6	40	29.5
10	20	14.7
12	12	8.8
15	14	10.3
19	10	7.3
21	20	14.7

\* Decrease torque by 20% if threads are lubricated

**WARNING:** High Pressure Systems require a primary pressure regulating device (i.e. regulator, unloader) and a secondary pressure relief device (i.e. pop-off valve, relief valve). Failure to install such relief devices properly could result in personal injury or damage to pump or property. GP does not assume any liability or responsibility for the operation of the user's high pressure system.



WARNING: This product can expose you to chemicals including lead, which is known to the state of California to cause cancer and birth defects or other reproductive harm. For more information, go to [www.P65Warnings.ca.gov](http://www.P65Warnings.ca.gov)