

**GENERAL PUMP** *A member of the Interpump Group*

# YLS Foamers

Foamer with 2 Liter Tank

## FEATURES

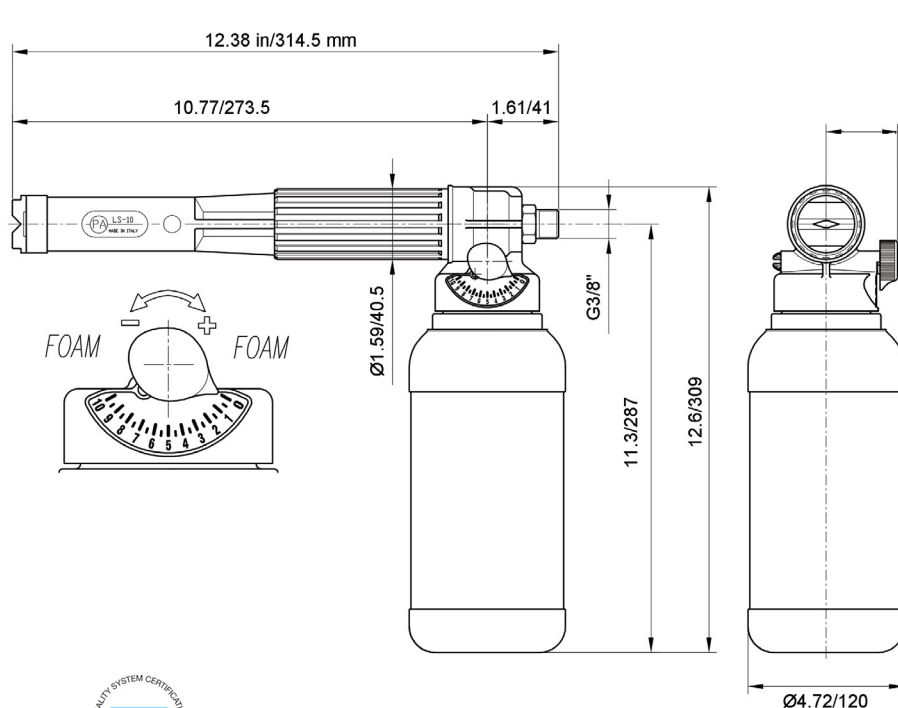
- Comfortable Impact Resistant Housing
- Forged Brass Body with Stainless Steel Diffuser
- Adjustable Injector
- 2 Liter Tank



## SPECIFICATIONS

Part Number	YLS10T215	YLS10T218	YLS10T221
Maximum Volume	6.5 GPM		
Maximum Discharge Pressure	3200 PSI		
Maximum Fluid Temperature	140 °F		
Inlet Port Thread	G 3/8"		
Tank Capacity	2 Liter		
Nozzle Size	1.5 mm	1.8 mm	2.1 mm
Weight	1.2 lbs		
Dimensions	12.4"x4.7"x12.2"		
Materials	Stainless Steel, Brass, Viton, Plastic		

## DIMENSIONS

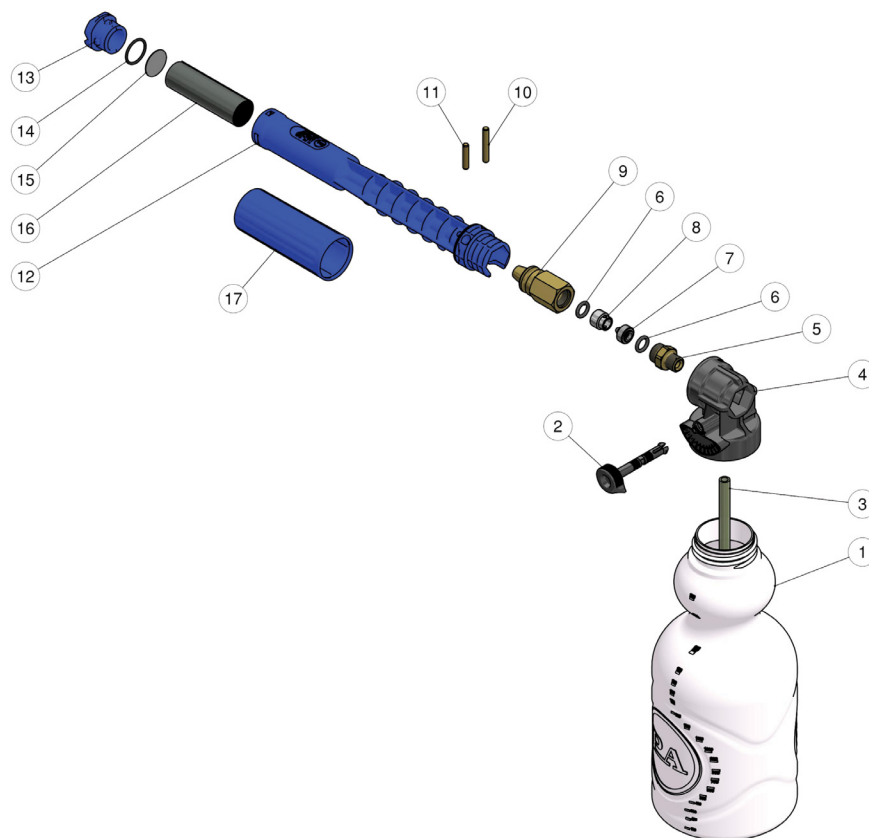


General Pump  
is a member of  
the Interpump Group



Ref 301171 Rev. A  
01-25



**PARTS LIST**

Item	Part Number	Description	Qty	Item	Part Number	Description	Qty
1	Y14650700	Tank, 2 Liters	1	9	Y25183931	Injector Body	1
2	Y25181784	Foam Adjustment Pin	1	10	Y30641631	Pin, 5x34 mm	1
3	Y29085285	Hose	1	11	Y30050931	Pin, 5x24.5 mm	1
4	Y25181684	Tank Holder	1	12	Y25183885	Plastic Housing	1
5	Y13502431	Nipple, 3/8"	1	13	Y25182785	Nozzle Front	1
6	Y10317400	O-ring, 2.62x9.93 mm	2	14	Y10307210	O-ring, 1.78x20.35 mm	1
7	Y29080651	Nozzle	1	15	Y29080253	Diaphragm	1
8	Y29080751	Counter Nozzle	1	16	Y29080385	Strainer	1
				17	Y25182885	Cover	1

**WARNING: High Pressure Systems require a primary pressure regulating device (i.e. regulator, unloader) and a secondary pressure relief device (i.e. pop-off valve, relief valve). Failure to install such relief devices properly could result in personal injury or damage to pump or property. GP does not assume any liability or responsibility for the operation of the user's high pressure system.**



WARNING: This product can expose you to chemicals including lead, which is known to the state of California to cause cancer and birth defects or other reproductive harm. For more information, go to [www.P65Warnings.ca.gov](http://www.P65Warnings.ca.gov)