

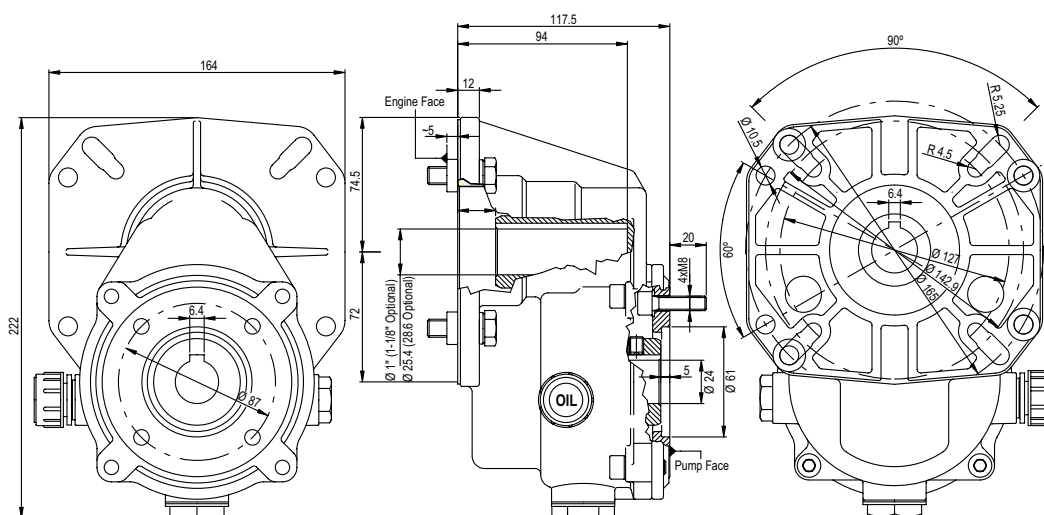
FEATURES

- Compact and lightweight
- Hardened steel helical gears for quiet operation
- Oil bath lubrication
- Dual bearing design for extended life
- J609a Flange mounts to most gasoline engines

SPECIFICATIONS

| Part Number | YGR1000 | YGR1000P | YGR1125 | YGR1125P | YGR1125P31 |
|------------------------|--|----------|------------------|----------|------------|
| Drive Ratio | 2.176:1 | | | | |
| Horsepower | 11 - 18 | 18 - 24 | 11 - 18 | 18 - 24 | 24 - 31 |
| Input (motor) Shaft Ø" | 1.0" / 25.4 mm | | 1.125" / 28.6 mm | | |
| Output (pump) Shaft Ø" | 24 mm | | | | |
| Motor Flange (SAE) | J609A | | | | |
| Pump Flange | Fits 47, 47SS and 66 Series General Pump | | | | |
| Oil Grade | SAE90 Gear Lube | | | | |
| Oil Capacity | 10 oz | | | | |
| Weight | 5.8 lbs. | | | | |

DIMENSIONS



General Pump
is a member of
the Interpump Group



Ref 300178 Rev. F
04-25



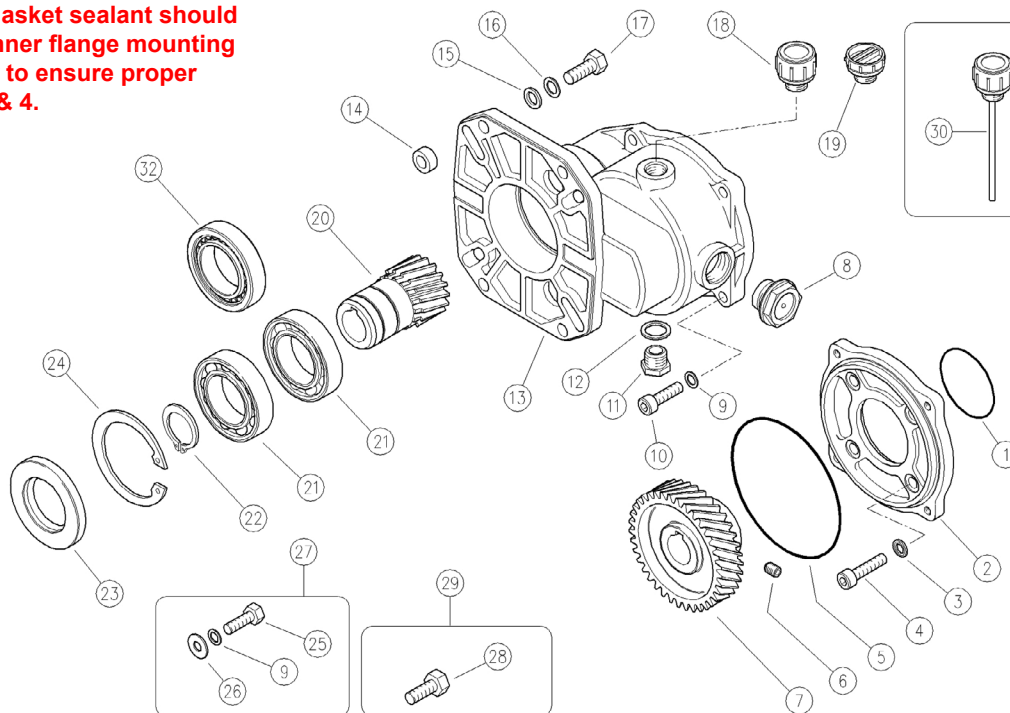
YGR1000/1125

GENERAL PUMP *A member of the Interpump Group*

Gear Reducer

PARTS LIST

NOTE: A RTV gasket sealant should be applied to inner flange mounting screws/washer to ensure proper sealing Pos. 3 & 4.



| NO. | PART # | DESCRIPTION | QTY. | NO. | PART # | DESCRIPTION | QTY. |
|-----|-----------|-----------------------|------|-----|-----------|-------------------------|------|
| 1. | Y10321056 | O-ring | 1 | 18. | Y15372600 | Oil Plug + Seal | 1 |
| 2. | Y50000244 | Flange | 1 | 19. | Y15372500 | Plastic Cap, 3/8" | 1 |
| 3. | Y14409800 | Washer, 8 mm | 4 | 20. | Y50000621 | Gear, 1" | 1 |
| 4. | Y16195831 | Screw, M8 x 30 mm | 4 | | Y50000721 | Gear, 1-1/8" | 1 |
| 5. | Y10321111 | O-ring | 1 | 21. | Y11444068 | Bearing (standard) | 2 |
| 6. | Y16222300 | Screw, M8x10 | 1 | | Y11444168 | Bearing ("P" models) | 2 |
| 7. | Y50000365 | 37 Gear, 24 mm | 1 | | Y11444168 | Bearing ("P31" model) | 1 |
| 8. | Y15373400 | Oil Plug | 1 | 22. | Y10104000 | Ring, Elastic, 40 mm | 1 |
| 9. | Y14365200 | Washer, 8.4 mm | 8 | 23. | Y10204072 | Seal, 40 mm | 1 |
| 10. | Y16195826 | Screw, M8x25 mm | 4 | 24. | Y10107200 | Ring, Elastic, 40x72 mm | 1 |
| 11. | Y60002831 | Plug, 3/8 BSP | 1 | 25. | Y16200900 | Screw, 5/16"x1" | 4 |
| 12. | Y14404200 | Washer, 16.7x22 mm | 1 | 26. | Y14357200 | Washer, 8.4x21 mm | 4 |
| 13. | Y50000144 | Housing | 1 | 27. | Y50001024 | Kit, 5/16" D, 127 mm | 1 |
| 14. | Y50000831 | Spacer | 4 | 28. | Y16203500 | Screw, M10 | 4 |
| 15. | Y14379800 | Washer, 10.5x17 mm | 4 | 29. | Y50001124 | Kit, D, 135 mm, M10 | 1 |
| 16. | Y14365300 | Washer, 10.5 mmx16 mm | 4 | 30. | Y15372800 | Oil Plug | 1 |
| 17. | Y16201000 | Screw, 3/8"x1-1/4" | 4 | 32. | Y11444568 | Bearing (P31 model) | 1 |

WARNING: High Pressure Systems require a primary pressure regulating device (i.e. regulator, unloader) and a secondary pressure relief device (i.e. pop-off valve, relief valve). Failure to install such relief devices properly could result in personal injury or damage to pump or property. GP does not assume any liability or responsibility for the operation of the user's high pressure system.



WARNING: This product can expose you to chemicals including lead, which is known to the state of California to cause cancer and birth defects or other reproductive harm. For more information, go to www.P65Warnings.ca.gov