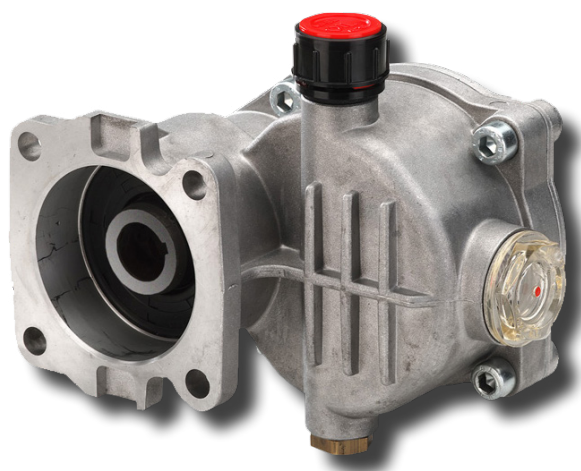
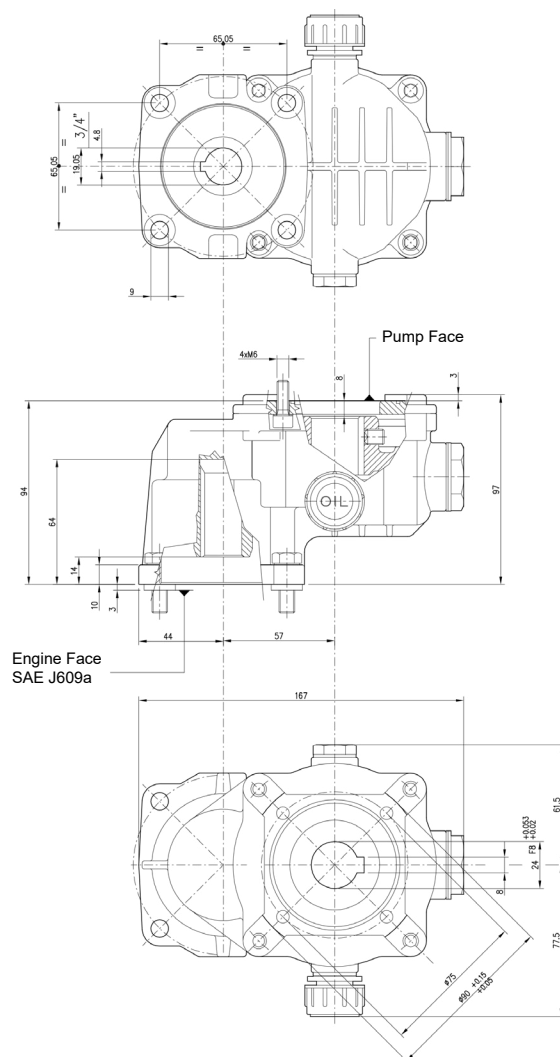


GENERAL PUMP *A member of the Interpump Group*

YGR0750

Gear Reducer


DIMENSIONS



SPECIFICATIONS

Part Number	YGR0750
Maximum Speed	3400 RPM
Engine Shaft Diameter	0.75"
Maximum Horsepower	6.5 EBHP
Gear Ratio	2.3:1
Weight	4.4 lbs.
Flange - SAE	J609a
Pump Shaft	24 mm
Oil Capacity	4.5 oz.
Oil	SAE 90

Works with the following Pumps:

EP Series - 58, ME Series - 81, ET Series - 53,
T Series - 51, TC Series - 60, TX Series - 63,
EZ Series - 44

FEATURES

- Compact design with easy-mount, universal flange for quick and direct coupling to a wide range of engines.
- Oil bath lubrication combined with premium quality, hardened steel helical gears for quiet operation and extended life
- Oversized bearing system is self-aligning. Reduces load on motor bearings and pump bearings.
- Reversible mounting for right or left hand drive gas engines. Includes reversible dipstick and oil level sight glass.



General Pump
is a member of
the Interpump Group



Ref 300177 Rev. C
03-24



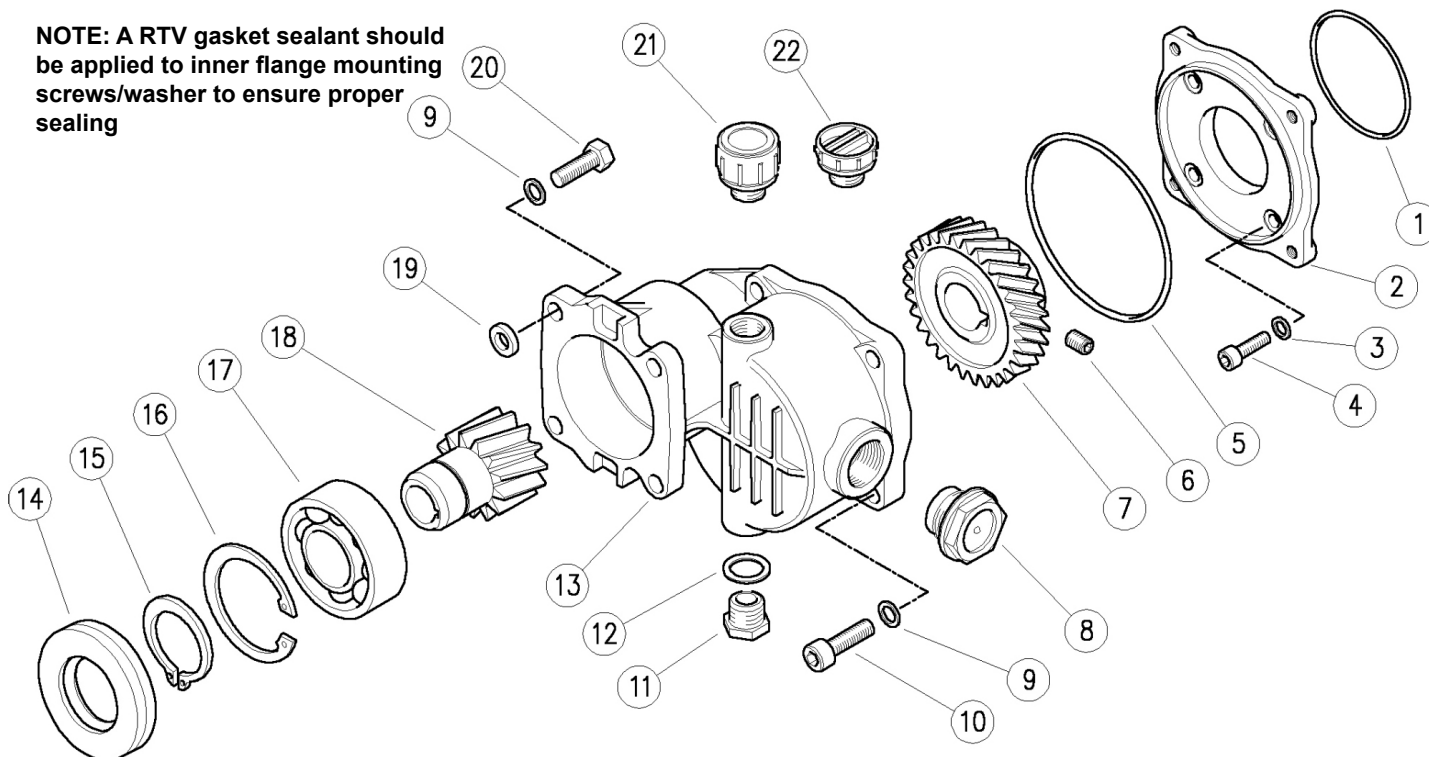
YGR0750

Gear Reducer

GENERAL PUMP *A member of the Interpump Group*

PARTS LIST

NOTE: A RTV gasket sealant should be applied to inner flange mounting screws/washer to ensure proper sealing



NO.	PART #	DESCRIPTION	QTY.	NO.	PART #	DESCRIPTION	QTY.
1.	Y10308163	O-ring, 1.78x63.22 mm	1	12.	Y14404200	Washer, 16,7x22x1,5 mm	1
2.	Y50060244	Gearbox flange, alum.	1	13.	Y50060144	Crankcase	1
3.	Y14409800	Sealing washer, d.6 mm	4	14.	Y10203662	Spacer, 30 mm	1
4.	Y16189518	Screw, M6 x 18 mm	4	15.	Y10101500	Snap ring, E 30	1
5.	Y10321088	O-ring, 262x88.57 mm	1	16.	Y10106200	Snap ring, I 62 mm	1
6.	Y16222300	Set screw, M8x10 mm	1	17.	Y11443062	Bearing, 30x62x16 mm	1
7.	Y50060365	Ring gear, Z.30 d.24mm	1	18.	Y50060461	Pinion, Z, 13	1
8.	Y15373400	Oil plug 3/4"	1	19.	Y50060541	Washer, 8,3x16x3 mm	4
9.	Y14365200	Washer, safety, 8.4 mm	8	20.	Y16200900	Screw, DIN933 5/16"UNFx1"	4
10.	Y16195826	Screw, M8x25 mm	4	21.	Y15372600	Oil plug 3/8" Bsp+seal	1
11.	Y60002831	Plug, 3/8 BSP	1	22.	Y15372500	Shipping cap	1

WARNING: High Pressure Systems require a primary pressure regulating device (i.e. regulator, unloader) and a secondary pressure relief device (i.e. pop-off valve, relief valve). Failure to install such relief devices properly could result in personal injury or damage to pump or property. GP does not assume any liability or responsibility for the operation of the user's high pressure system.



WARNING: This product can expose you to chemicals including lead, which is known to the state of California to cause cancer and birth defects or other reproductive harm. For more information, go to www.P65Warnings.ca.gov