

GENERAL PUMP A member of the Interpump Group

FEATURES

- Light Cracking Pressure
- Stainless Body with Stainless Wetted Parts
- O-ring on Poppet for a Leak Proof Seal
- Solid Body Construction, Won't Come Apart During Installation

Check Valves

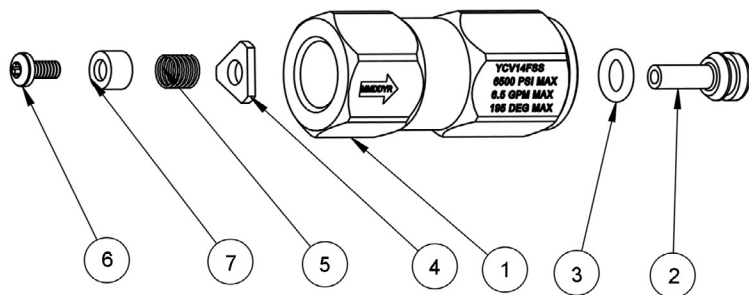
Stainless Steel Check Valves



SPECIFICATIONS

Part Number	YCV14FSS	YCV38FSSSLC	YCV38FSS	YCV12FSS	YCV34FSS
Body Material	Stainless Steel				
Max Volume	6.5 GPM	10.5 GPM		21.0 GPM	48.0 GPM
Max Discharge Pressure	6,500 PSI				
Max Fluid Temperature	195° F				
Port Sizes	1/4" NPT	3/8" NPT		1/2" NPT	3/4" NPT
Cracking Pressure	4 PSI	0.5 PSI	2.5 PSI	4.4 PSI	3.0 PSI
Shipping Weight	.5 lbs				
Length	1.85"	2.13		2.60	3.50"

PARTS LIST



No.	Part No.	Description	Qty.
1	520239	Body, Checkvalve, YCV14FSS	1
	520240	Body, Checkvalve, YCV38FSS, YCV38FSSSLC	1
	520241	Body, Checkvalve, YCV12FSS	1
	520242	Body, Checkvalve, YCV34FSS	1
2	520235	Piston, Checkvalve, YCV14FSS	1
	520236	Piston, Checkvalve, YCV38FSS, YCV38FSSSLC	1
	520237	Piston, Checkvalve, YCV12FSS	1
	520238	Piston, Checkvalve, YCV34FSS	1
3	701009V90	O-ring, Viton, YCV14FSS,	1
	701011V90	O-ring, Viton, YCV38FSS, YCV38FSSSLC	1
	701111V90	O-ring, Viton, YCV12FSS	1
	701113V90	O-ring, Viton, YCV34FSS	1
4	540081	Retainer, YSC14FSS	1
	540082	Retainer, YSC38FSS, YSC38FSSSLC	1
	540083	Retainer, YSC12FSS	1
	540084	Retainer, YSC34FSS	1
	720062	Spring, YCV14FSS	1
	720075	Spring, YCV38FSSSLC	1
	720063	Spring, YCV38FSS	1
	720064	Spring, YCV12FSS	1
	720064	Spring, YCV34FSS	1
6	201008	Screw, 4-40 UNC, T8, YCV14FSS	1
	201009	Screw, 8-32 UNC, T15, YCV38FSS	1
	201010	Screw, 1/4-20 UNC, YCV12FSS	1
	201011	Screw, 1/4-20 UNC, YCV34FSS	1
7	520347	Spring Stop, YCV14FSS	1
	520348	Spring Stop, YCV38FSS	1
	520349	Spring Stop, YCV12FSS	1
	520349	Spring Stop, YCV34FSS	1



WARNING: This product can expose you to chemicals including lead, which is known to the state of California to cause cancer and birth defects or other reproductive harm. For more information, go to www.P65Warnings.ca.gov

WARNING: High Pressure Systems require a primary pressure regulating device (i.e. regulator, unloader) and a secondary pressure relief device (i.e. pop-off valve, relief valve). Failure to install such relief devices properly could result in personal injury or damage to pump or property. GP does not assume any liability or responsibility for the operation of the user's high pressure system.



General Pump
is a member of
the Interpump Group



GENERAL PUMP 1174 Northland Drive • Mendota Heights, MN 55120
Phone: 651.686.2199 • Fax: 800.535-1745 • e-mail: sales@gpcompanies.com • www.generalpump.com

Ref 300880 Rev. F
04-25

