

66 Series, TSF

*High Flow Triplex Pump***FEATURES**

- Oversized roller bearings
- Fully anodized crankcase
- Innovative new seal design extends seal life
- New plunger design improves thermal shock resistance
- New valve plate covers

**SPECIFICATIONS**

Pump Model	TSF3121
Maximum Volume	18.5 GPM
Maximum Discharge Pressure	2175 PSI
Horsepower	27.5 EBHP
Maximum Pump Speed	1450 RPM
Inlet Pressure	Flooded to 70 PSI
Plunger Bore (in / mm)	1.220 in. / 31 mm
Plunger Stroke (in / mm)	.826 in. / 21 mm
Oil Capacity	33.8 oz.
Maximum Fluid Temp	165° F
Inlet Port Thread	1" BSPP-F
Discharge Port Thread	1/2 BSPP-F
Shaft Diameter (in / mm)	.945 in. / 24 mm
Weight	49.2 lbs / 22.3 kg
Dimensions	13.60" x 9.55" x 7.48"

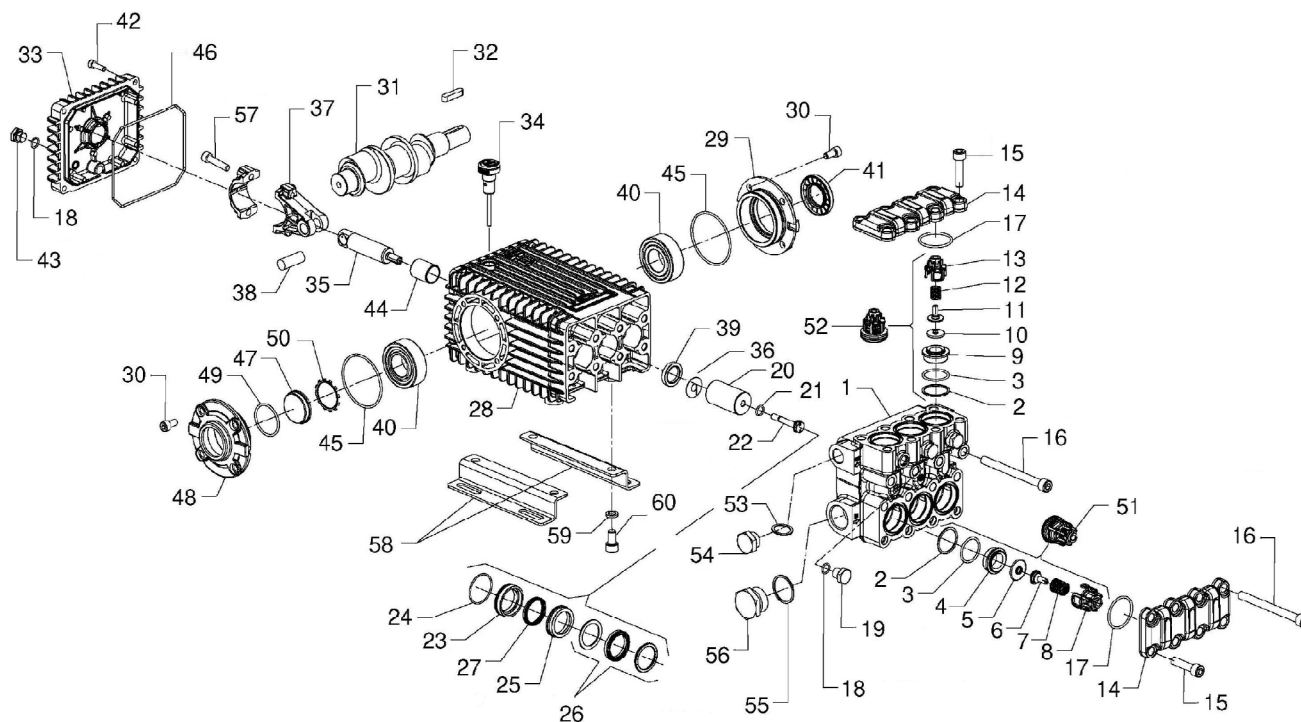


General Pump
is a member of
the Interpump Group



Ref 301158 Rev. B
04-25





PARTS LIST

No.	Part No.	Description	Qty.	No.	Part No.	Description	Qty.	No.	Part No.	Description	Qty.
1	66125541	Manifold, Ø 31	1	22	66219566	Plunger Bolt	3	43	98204250	Plug, G 1/4" x 9	1
2	90517800	O-ring, Ø 31 x 35.5 x 1.5	6	23	66083070	Bottom Ring	3	44	90912600	Guide Bushing	3
3	90386500	O-ring, Ø 29.82 x 2.62	6	24	90362000	O-ring, Ø 37.82 x 1.78	3	45	90391300	O-ring, Ø 67.95 x 2.62	2
4	36204866	Valve Seat	3	25	66221270	Intermediate Ring, Ø 31	3	46	90392200	O-ring, Ø 133.02 x 2.62	1
5	36216266	Valve Poppet	3	26	90277980	Seal, HP, Ø 31 x 40 x 10	3	47	70211801	Oil Sight Glass	1
6	36216151	Valve Guide, Internal	3	27	90277900	Seal, LP, Ø 31 x 37 x 5	3	48	47151222	Side Cover	1
7	94744700	Valve Spring Ø 15.9 x 24.3	3	28	66010022	Crankcase	1	49	90387700	O-ring, Ø 39.34 x 2.62	1
8	36216005	Valve Guide	3	29	47151022	Side Cover, PTO	1	50	90075600	Retainer Clip	1
9	36203866	Valve Seat	3	30	99303900	Screw, M8 x 16	8	51	36727701	Intake Valve, Complete	3
10	36209956	Valve Poppet	3	31	66020435	Crankshaft	1	52	36713401	Outlet Valve, Complete	3
11	36210151	Valve Guide, Internal	3	32	91489200	Key, 8 x 7 x 35	1	53	96751400	Washer, Ø 21.5 x 27 x 1.5	1
12	94740100	Valve Spring, Ø 12.0 17.0	3	33	66160022	Rear Cover	1	54	98217900	Plug, G 1/2" x 10	1
13	36213805	Valve Guide	3	34	98210600	Oil Dipstick	1	55	96787000	Washer, Ø 33.5 x 38 x 1.5	1
14	66221341	Valve Plate	2	35	66050066	Plunger Guide	3	56	98232600	Plug, G 1" x 17	1
15	99371200	Screw, M10 x 40	12	36	96710100	Washer, Ø 10 x 28 x 0.5	3	57	99309900	Screw, Connecting Rod	6
16	99381700	Screw, M10 x 110	8	37	66030001	Connecting Rod, Complete	3	58	47200074	Pump Feet	2
17	90387800	O-ring, Ø 39.34 x 2.62	6	38	97740500	Wrist Pin Ø 14 x 39	3	59	96710600	Washer, Ø 10.2 x 16 x 2.5	4
18	90358500	O-ring, Ø 10.82 x 1.78	4	39	90162500	Stop Ring, Ø 22 x 32 x 5	3	60	99364400	Screw, M10 x 18	4
19	98204300	Plug, G 1/4" x 13	4	40	91838000	Roller Bearing	2				
20	66041109	Plunger, Ø 31	3	41	90164800	Seal, Shaft	1				
21	90358400	O-ring, Ø 10.82 x 1.78	3	42	99188400	Screw, M6 x 20	4				

REPAIR KITS

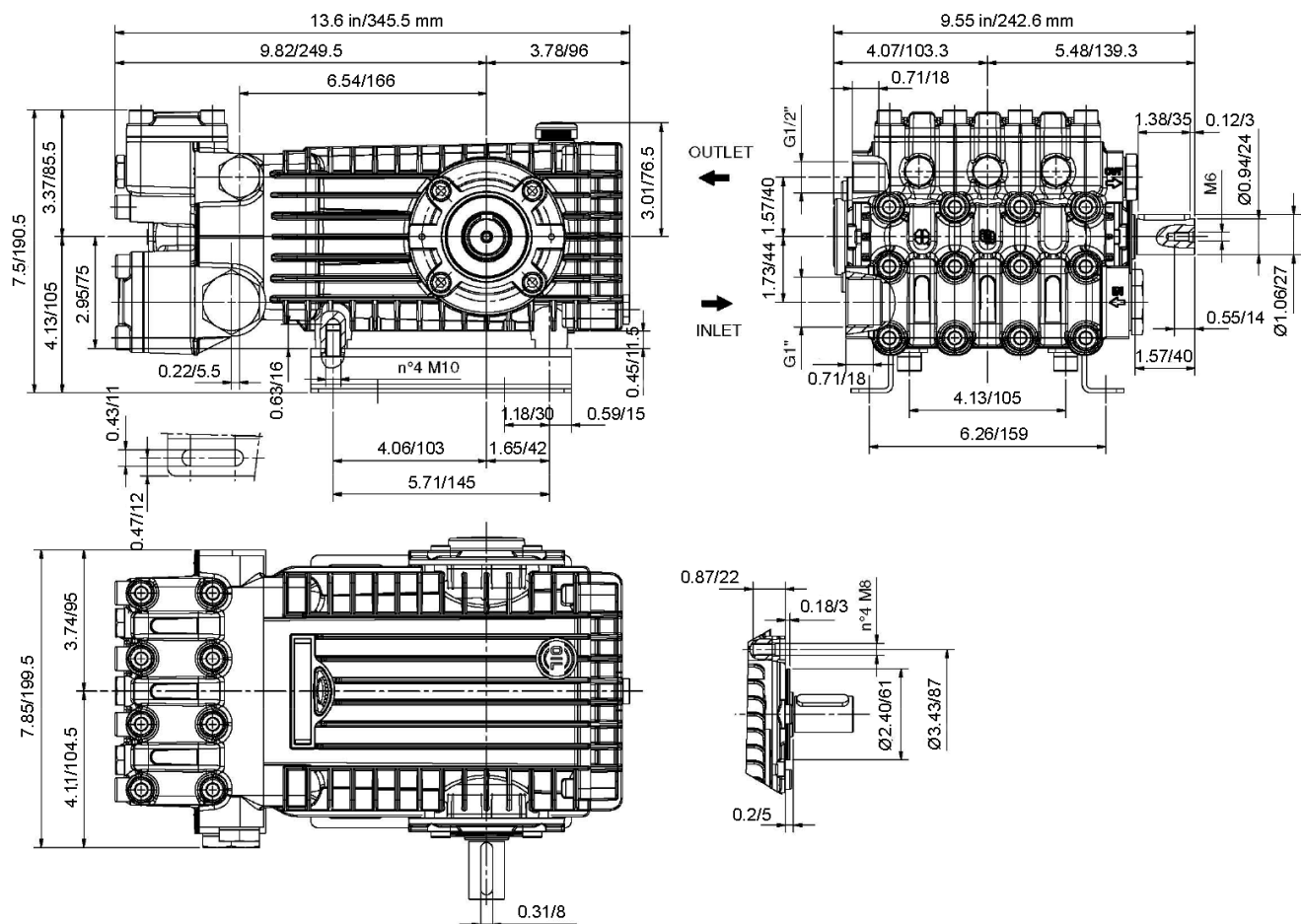
KIT NO.	K02	K03	K2468	F2001	K419	K420
POS. NO's INCLUDED IN KIT	39	41	2, 3, 4, 5, 6, 7, 8, (51)	2, 3, 4, 5, 6, 7, 8, (52)	26, 27	23, 24, 25, 26, 27
NUMBER OF ASSEMBLIES IN KIT	3	1	3	3	3	1
NUMBER OF CYLINDERS KIT WILL SERVICE	3	N/A	3	3	3	1

TORQUE SPECS*

POS.	Nm	Ft/lb
15	60	44.25
16	60	44.25
19	40	29.5
22**	20	14.75
30	20	14.75
42	10	7.38
43	20	14.75
54	40	29.5
56	100	73.75
57	20	14.75
60	40	29.5

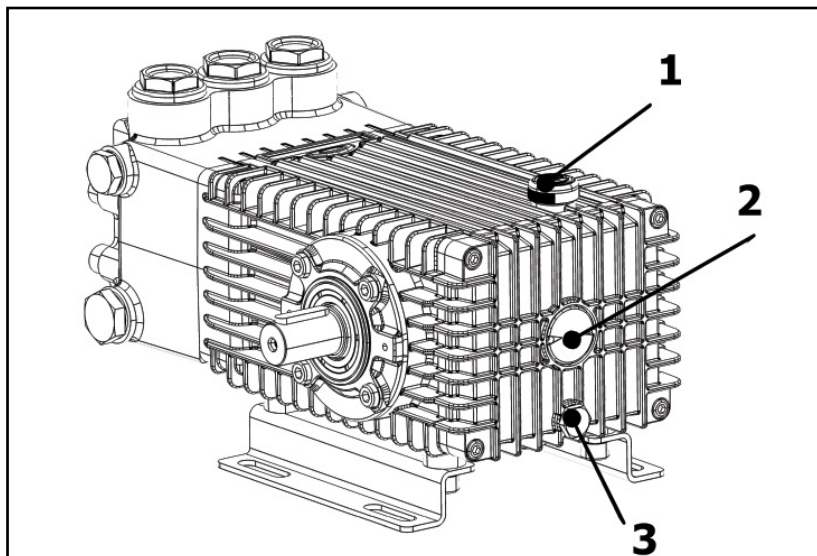
* Decrease torque by 20% if threads are lubricated

** Use Loc-Tite 542 or similar

DIMENSIONAL DRAWING


OIL CHANGING

1. Oil changing must be done with the pump at operating temperature.
- 1.2 Put a container under the oil drain plug (3).
- 1.3 Remove the oil dipstick (1) and then the drain plug (3).
- 1.4 Wait until all the oil has drained out, then screw the drain plug (3) and tighten at the torque shown in the exploded diagram and above table.
- 1.5 Fill with new oil (General Pump Series 100) until the middle of the oil sight glass is reached, screw by hand the oil dipstick (1).



WARNING: High Pressure Systems require a primary pressure regulating device (i.e. regulator, unloader) and a secondary pressure relief device (i.e. pop-off valve, relief valve). Failure to install such relief devices properly could result in personal injury or damage to pump or property. GP does not assume any liability or responsibility for the operation of the user's high pressure system.



WARNING: This product can expose you to chemicals including lead, which is known to the state of California to cause cancer and birth defects or other reproductive harm. For more information, go to www.P65Warnings.ca.gov