

FEATURES

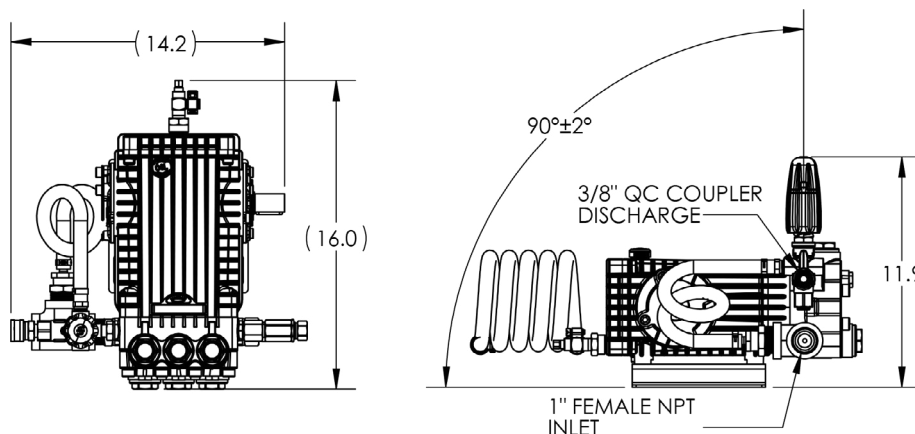
- Pump is ready to use right out of the box
- TSF2021/TSF2221 Pump with 24mm Solid Shaft
- ZH284K Unloader, 4060 PSI, 10 GPM
- 3/8" Quick Coupler and 3/8" Plug Included
- 1" Inlet Fitting
- 3/8" Hose Barb and Clamp Keeps Hose Secure and Sealed
- General Pump recommends installing a secondary relief and pressure gauge
- Also available in "L" Left-handed drive
Example: PMRTSF2021L



SPECIFICATIONS

Pump Model	PMRTSF2021	PMRTSF2221
Maximum Volume	8.5 GPM	10.5 GPM
Maximum Discharge Pressure	3600 PSI	3000 PSI
Maximum Pump Speed	1750 RPM	
Maximum Inlet Pressure	Flooded to 70 PSI	
Plunger Bore	.787 in / 20 mm	.866 in / 22 mm
Plunger Stroke	.826 in / 21 mm	
Crankcase Oil Capacity	33.8 oz.	
Maximum Fluid Temperature	165° F	
Inlet Port Thread	1-11.5 NPT-F	
Discharge Port Thread	3/8-18 NPT-F	
Shaft Diameter	.945 in. / 24 mm	
Weight	50 lbs.	
Dimensions	11.9" x 14.2" x 16.0"	

DIMENSIONAL DRAWING

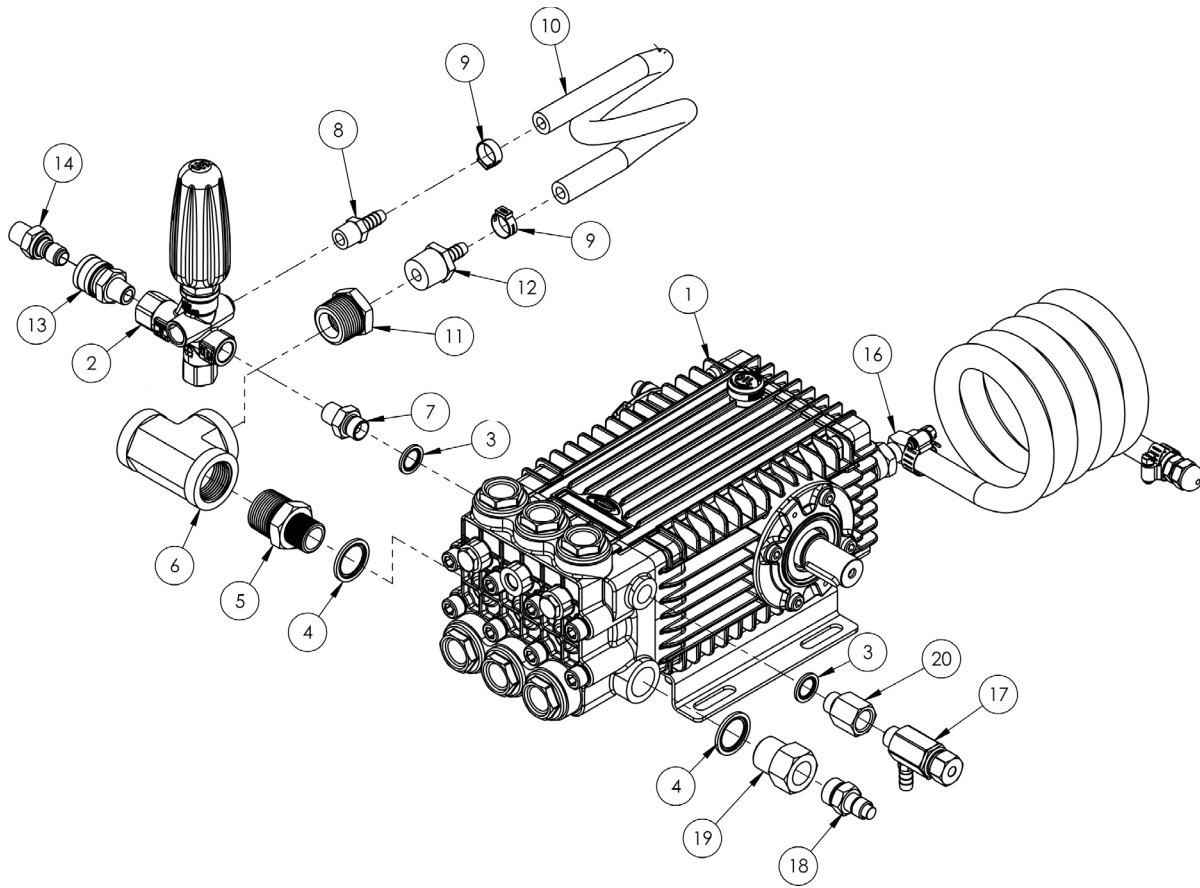


General Pump
is a member of
the Interpump Group



Ref 301151 Rev. B
08-24







PARTS LIST


No.	PART No.	DESCRIPTION	QTY.
1.	TSF2021	PUMP, 66 SER, 20MM, 8.5 GPM, 3600 PSI	1
	TSF2221	PUMP, 66 SER, 22MM, 10.2 GPM, 3,000 PSI	1
2.	ZH284K	UNLOADER, TP, 3/8" NPT, 10.5 GPM, 4050 PSI, WITH KNOB	1
3.	680029	WASHER, FACE SEAL, 3/8 BSPP	2
4.	680111	SEAL RING, 3/4" BSPP	2
5.	639346	NIPPLE, HEX 3/4"M-BSPP X 1"M-NPT	1
6.	638120	TEE, 1" NPT	1
7.	639298	ADAPTER, HEX, 3/8" BSPP-M X 3/8" NPT-M, PLATED STEEL	1
8.	638148	3/8 HOSE BARB X 3/8 NPT	1
9.	639897	HOSE CLAMP, CRIMP TYPE, 39/64" TO 47/64", 9/32"WD	2
10.	639387	HOSE, 3/8" ID, 250 PSI	2
11.	638140	BUSHING, REDUCING, 1" X 3/4" NPT	1
12.	638150	3/8 HOSE BARB X 3/4 NPT	1
13.	D10004	COUPLER, 3/8"QC X 3/8"NPT-M, BRASS	1
14.	D11009	PLUG, 3/8QC X 3/8NPT-M, ZINC PLATED STEEL, HARDENED	1
15.	400128	WARNING LABEL, PROP 65, 1.5"L X .25"WD	1
16.	190446	OIL DRAIN KIT, 1/4"	1
17.	10098243	ASSY, RV, 3/8" NPT, SS, 6-12 GPM, PRESET, 4300 PSI	1
	10098236	ASSY, RV, 3/8" NPT, SS, 6-12 GPM, PRESET, 3600 PSI	
18.	2100612	VALVE, PTP, 1/2"NPT-M, 140-151DEG, 145PSI	1
19.	639612	ADAPTER, 3/4" BSPP-M X 1/2" NPT-F	1
20.	680266	ADAPTER, 3/8"BSPP-M X 3/8"NPT-F, STEEL, 5500 PSI	1


WARNINGS

WARNING: High Pressure Systems require a primary pressure regulating device (i.e. regulator, unloader) and a secondary pressure relief device (i.e. pop-off valve, relief valve). Failure to install such relief devices properly could result in personal injury or damage to pump or property. GP does not assume any liability or responsibility for the operation of the user's high pressure system.

 During use, never exceed the maximum values of pressure, flow rate and temperature as stated in this document.

 Maintenance and repair must be carried out by qualified and authorized staff only. Replace the filter parts with original spare parts only.

 From time to time, it is necessary to check that the parts which are under pressure do not show cracks and/or leakages; the frequency of this check depends on the actual use. Inspect and clean the screen regularly.

 WARNING: This product can expose you to chemicals including lead, which is known to the state of California to cause cancer and birth defects or other reproductive harm. For more information, go to www.P65Warnings.ca.gov