

**GENERAL PUMP** *A member of the Interpump Group*

# DGE4012W

## Rear Inlet Spray Gun



### SPECIFICATIONS

|                      |                                    |                          |
|----------------------|------------------------------------|--------------------------|
| Part Number:         | <b>DGE4012W</b>                    |                          |
| Maximum Volume:      | 12.0 GPM                           |                          |
| Maximum Pressure:    | 4000 PSI                           |                          |
| Maximum Temperature: | 300° F                             |                          |
| Port Sizes:          | Inlet<br>Outlet                    | 3/8" NPT-F<br>1/4" NPT-F |
| Dimensions:          | 9.5" x 5.25" x 1.2"                |                          |
| Weight:              | 1.0 lbs.                           |                          |
| Material:            | Brass, Stainless Steel,<br>Plastic |                          |

### FEATURES

- Economic design with brass inlet and outlet
- All flow passages designed for minimum pressure drop - maximum flow
- Large comfortable hand grip to accommodate work gloves
- Additional venting for excellent high temperature performance
- Durable glass-filled housing
- Trigger made from 30% glass filled Nylon 6.6



General Pump  
is a member of  
the Interpump Group



Ref 300978 Rev B  
08-24

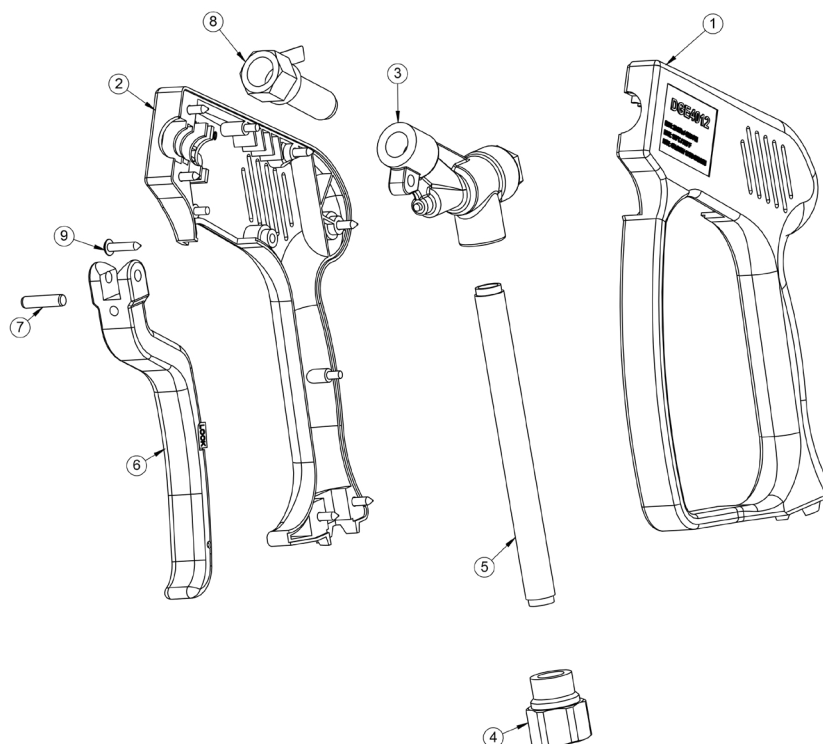


# DGE4012W

## Rear Inlet Spray Gun

**GENERAL PUMP** *A member of the Interpump Group*

### PARTS LIST



| POS. | PART NO. | DESCRIPTION                       | QTY. |
|------|----------|-----------------------------------|------|
| 1    | 2660308  | Housing, Gun, Left                | 1    |
| 2    | 2660300  | Housing, Gun, Right               | 1    |
| 3    | 2103275  | Insert, Gun, 4,000 PSI, 12 GPM    | 1    |
| 4    | 2510230  | Fitting, Inlet, Gun               | 1    |
| 5    | 2550188  | Tube, Inlet, Gun                  | 1    |
| 6    | 2103277  | Assy, Sub, Trigger, Gun, DGE4012W | 1    |
| 7    | 2520132  | Pin, Trigger                      | 1    |
| 8    | 2510240  | Fitting, Outlet, Gun              | 1    |
| 9    | 2200065  | Screw                             | 7    |
|      | 2103275  | Repair Kit                        |      |

**WARNING:** High Pressure Systems require a primary pressure regulating device (i.e. regulator, unloader) and a secondary pressure relief device (i.e. pop-off valve, relief valve). Failure to install such relief devices properly could result in personal injury or damage to pump or property. GP does not assume any liability or responsibility for the operation of the user's high pressure system.



WARNING: This product can expose you to chemicals including lead, which is known to the state of California to cause cancer and birth defects or other reproductive harm. For more information, go to [www.P65Warnings.ca.gov](http://www.P65Warnings.ca.gov)