

GENERAL PUMP *A member of the Interpump Group*

DGE4012

Rear Inlet Spray Gun



SPECIFICATIONS

Part Number:	DGE4012	
Maximum Volume:	12.0 GPM	
Maximum Pressure:	4000 PSI	
Maximum Temperature:	300° F	
Port Sizes:	Inlet Outlet	3/8" NPT-F 1/4" NPT-F
Dimensions:	9.5" x 5.25" x 1.2"	
Weight:	1.0 lbs.	
Material:	Brass, Stainless Steel, Plastic	

FEATURES

- Economic design with brass inlet and outlet
- All flow passages designed for minimum pressure drop - maximum flow
- Large comfortable hand grip to accommodate work gloves
- Additional venting for excellent high temperature performance
- Durable glass-filled housing
- Trigger made from 30% glass filled Nylon 6.6



General Pump
is a member of
the Interpump Group



Ref 310096 Rev C
08-24

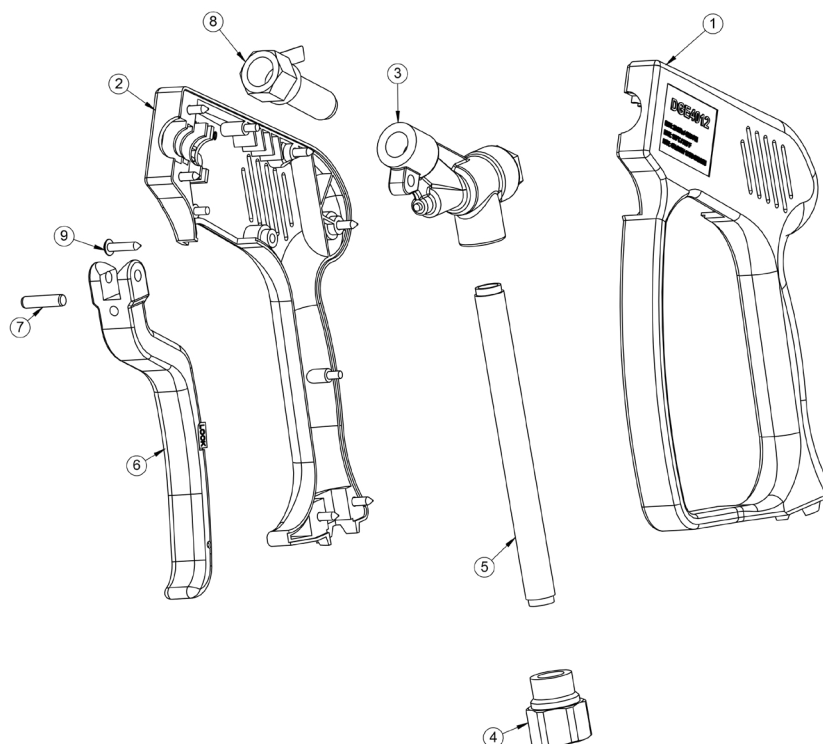


DGE4012

Rear Inlet Spray Gun

GENERAL PUMP *A member of the Interpump Group*

PARTS LIST



POS.	PART NO.	DESCRIPTION	QTY.
1	2660426	Housing, Gun, Left	1
2	2660300	Housing, Gun, Right	1
3	2103412	Insert, Gun, 4,000 PSI, 12 GPM	1
4	2510230	Fitting, Inlet, Gun	1
5	2550188	Tube, Inlet, Gun	1
6	2103266	Assy, Sub, Trigger, Gun, DGE4012	1
7	2520132	Pin, Trigger	1
8	2510240	Fitting, Outlet, Gun	1
9	2200065	Screw	7

WARNING: High Pressure Systems require a primary pressure regulating device (i.e. regulator, unloader) and a secondary pressure relief device (i.e. pop-off valve, relief valve). Failure to install such relief devices properly could result in personal injury or damage to pump or property. GP does not assume any liability or responsibility for the operation of the user's high pressure system.



WARNING: This product can expose you to chemicals including lead, which is known to the state of California to cause cancer and birth defects or other reproductive harm. For more information, go to www.P65Warnings.ca.gov