



GENERAL PUMP



HOSE REELS

www.generalspump.com • 888.474.5487

Semi-Professional Hose Reels



Features and Specifications

- Direct hand-crank rewind with pin lock
- Solid steel construction
- Durable black powder coated finish
- Brass swivel with stainless steel internal stem
- Hardware provided for mounting to cart handle or bumper

Model	3/8" Cap.	PSI	Bar	Max Temp	Inlet	Outlet	Weight	Pallet Qty.
D30001	50'	4,000	276	225° F	3/8" NPT-F	3/8" NPT-F	9 lbs.	72
D30002	100'	4,000	276	225° F	3/8" NPT-F	3/8" NPT-F	11 lbs.	54
D30004	150'	4,000	276	225° F	3/8" NPT-F	3/8" NPT-F	18 lbs.	42
D30006	200'	4,000	276	225° F	3/8" NPT-F	3/8" NPT-F	20 lbs.	28

NEW



Features and Specifications

- Direct hand-crank rewind with pin lock
- Solid stainless steel construction
- SS swivel with internal ball bearing

Model	3/8" Cap.	PSI	Bar	Max Temp	Inlet	Outlet	Weight	Pallet Qty.
D30001SS	50'	4,000	276	250° F	3/8" NPT-F	3/8" NPT-F	9 lbs.	72
D30002SS	100'	4,000	276	250° F	3/8" NPT-F	3/8" NPT-F	11 lbs.	54

Professional Hose Reels



Features and Specifications

- Direct hand-crank rewind with pin lock
- Solid steel construction with one-piece welded drum
- Durable black powder coated finish
- 5000 PSI rated forged brass swivel
- NEW high-pressure stainless steel core tube

Model	3/8" Cap.	PSI	Bar	Max Temp	Inlet	Outlet	Weight	Pallet Qty.
DHR50100	100'	5,000	345	300° F	3/8" NPT-M	3/8" NPT-F	18 lbs.	36
DHR50150	150'	5,000	345	300° F	3/8" NPT-M	3/8" NPT-F	19 lbs.	24

NEW



Features and Specifications

- SS swivel with internal ball bearing
- Added support plates at the center of flanges for increased durability
- Fully rolled edges on hub ensures the hose does not get cut or frayed
- Collapsible handle for easier storage
- Ability to mount with D3000x accessories
- Compact U-shaped design
- Comes with (2) 1/2" to 3/8" adapters

Model	3/8" Cap.	PSI	Bar	Max Temp	Inlet	Outlet	Weight	Pallet Qty.
DHRUS50150	150'	5,000	345	250° F	1/2" NPT-F	1/2" NPT-F	30 lbs.	30
DHRUS50300	300'	5,000	345	250° F	1/2" NPT-F	1/2" NPT-F	35 lbs.	16

Professional Hose Reels



Features and Specifications

- Stainless steel 5,000 PSI swivel w/ internal ball bearings
- Heavy duty stainless steel construction
- One-piece welded drum
- Robust folding handle
- Direct hand-crank rewind with locking pin
- Comes with (2) 1/2" to 3/8" adapters
- High-pressure stainless steel core tube

Model	3/8" Cap.	PSI	Bar	Max Temp	Inlet	Outlet	Weight	Pallet Qty.
DHR50150SS	150'	5,000	345	250° F	1/2" NPT-M	1/2" NPT-F	15 lbs.	24



Features and Specifications

- Brass swivel with stainless steel internal stem
- Includes drum pin-lock and friction brake
- Durable high-gloss powder coated finish
- One-piece welded drum
- Direct hand-crank rewind

Model	3/8" Cap.	PSI	Bar	Max Temp	Inlet	Outlet	Weight	Pallet Qty.
DHRWM50200	200'	4,000	276	225° F	1/2" NPT-F	3/8" NPT-F	15 lbs.	30

Pedestal Hose Reels



Features and Specifications

- 5000 PSI rated forged brass swivel
- Durable powder coat on reel
- HD pedestal stand - mount on wall, workbench, pressure washer
- One-piece welded drum
- Robust folding handle
- NEW high-pressure stainless steel core tube

Model	3/8" Cap.	PSI	Bar	Max Temp	Inlet	Outlet	Weight	Pallet Qty.
DHRP50150	150'	5,000	345	300° F	3/8" NPT-M	3/8" NPT-F	31 lbs.	24

Hand Carry Hose Reels

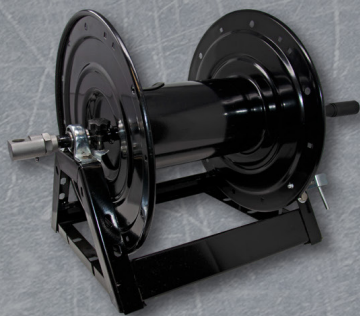


Features and Specifications

- 5,000 PSI rated swivel
- Durable powder coat on reel (DHRHC50150)
- Stainless steel reel (DHRHC50150SS)
- Stainless steel swivel (DHRHC50150SS)
- Stainless steel hand carry base
- Stainless steel assembly hardware
- Comes with (2) 1/2" to 3/8" adapters (DHRHC150SS)
- Robust folding handle (DHRHC150SS)
- High-pressure stainless steel core tube

Model	3/8" Cap.	PSI	Bar	Max Temp	Inlet	Outlet	Weight	Pallet Qty.
DHRHC50100	100'	5,000	345	250° F	3/8" NPT-M	3/8" NPT-F	23 lbs.	20
DHRHC50150SS	150'	5,000	345	250° F	1/2" NPT-M	1/2" NPT-F	24 lbs.	20

Industrial Hose Reels

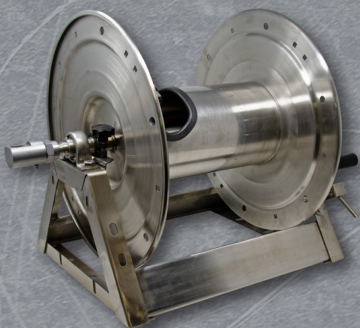


Features and Specifications

- Stainless steel 5,000 PSI swivel w/ internal ball bearings
- HD steel welded frame and HD sealed axle bearings
- Durable powder coated finish
- Stainless steel assembly hardware
- Drum pin-lock and friction brake
- Robust folding handle
- One-piece welded drum
- Reversible swivel/handle
- Comes with (2) 1/2" to 3/8" adapters

Model	3/8" Cap.	PSI	Bar	Max Temp	Inlet	Outlet	Weight	Pallet Qty.
DHRA50150	150'	5,000	345	250° F	1/2" NPT-F	1/2" NPT-F	37 lbs.	24
DHRA50300	300'	5,000	345	250° F	1/2" NPT-F	1/2" NPT-F	42 lbs.	16
DHRA50450	450'	5,000	345	250° F	1/2" NPT-F	1/2" NPT-F	48 lbs.	16

Stainless Steel Industrial Hose Reels



Features and Specifications

- Heavy duty stainless steel construction
- Stainless steel 5,000 PSI swivel w/ internal ball bearings
- SS welded frame and HD sealed axle bearings
- Stainless steel assembly hardware
- Drum pin-lock and friction brake
- Robust folding handle
- One-piece welded drum
- Reversible swivel/handle
- Comes with (2) 1/2" to 3/8" adapters

Model	3/8" Cap.	PSI	Bar	Max Temp	Inlet	Outlet	Weight	Pallet Qty.
DHRA50150SS	150'	5,000	345	250° F	1/2" NPT-F	1/2" NPT-F	37 lbs.	24
DHRA50300SS	300'	5,000	345	250° F	1/2" NPT-F	1/2" NPT-F	42 lbs.	16
DHRA50450SS	450'	5,000	345	250° F	1/2" NPT-F	1/2" NPT-F	48 lbs.	16

Trailer Mount Hose Reels



Features and Specifications

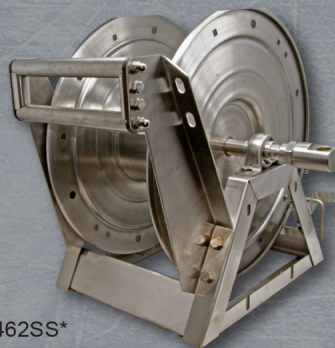
- Stainless steel 5,000 PSI swivel w/ internal ball bearings
- Durable high-gloss black powder coated finish
- 180° pivoting hose guide
- One-piece welded drum
- Direct hand-crank rewind with locking pin
- Robust folding handle
- 360° Pivoting hose reel with dual HD bearings

Model	3/8" Cap.	PSI	Bar	Max Temp	Inlet	Outlet	Weight	Pallet Qty.
DHRTM50100	100'	5,000	345	250° F	1/2" NPT-F	1/2" NPT-F	33 lbs.	20
DHRTM50200	200'	5,000	345	250° F	1/2" NPT-F	1/2" NPT-F	36 lbs.	16

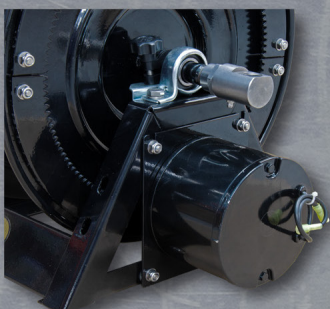
DHRA Series Hose Reel Accessories



2100462*



2100462SS*



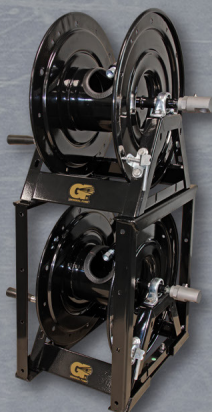
2103410*



DMC12V



2100465*



2100437*



2100437SS*

Model	Description
2100462	Kit, Hose guide, Protects hose when hose is pulled, fits DHRA50150
2100463	Kit, Hose guide, Protects hose when hose is pulled, fits DHRA50300
2100503	Kit, Hose guide, Protects hose when hose is pulled, fits DHRA50450
2100462SS	Kit, Hose guide, Stainless steel, Protects hose when hose is pulled, fits DHRA50150SS
2100463SS	Kit, Hose guide, Stainless steel, Protects hose when hose is pulled, fits DHRA50300SS
2100503SS	Kit, Hose guide, Stainless steel, Protects hose when hose is pulled, fits DHRA50450SS
DMC12V	Kit, 12 Volt DC, 30 AMP variable speed controller rewind
2103410	Power rewind kit, 12 Volt motor kit for A-frame hose reels, included motor, hardware and gear
2100465	Kit, Cart DHRA hose reels
2100437	Kit, Hose reel stacking kit, fits DHRA hose reels, Stacks up to 4 reels
2100437SS	Kit, Hose reel stacking kit, Stainless steel, fits DHRA SS hose reels, Stacks up to 4 reels
*Hose reels sold separately	

Other Hose Reel Accessories



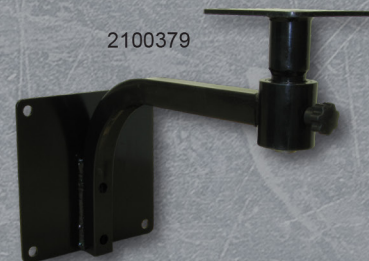
DHRFM



DHRUM



2100379



2100531



2100580



2100375



2100012

Model	Description
DHRFM	Flat-based base mount for DHTRM50100 and DHRTM50200
DHRUM	Universal mounting kit for DHRTM50100 and DHRTM50200
2100379	Kit, Wall mount with swivel plate for D3000 and DHR hose reels
2100531	Kit, Wall mount kit for DHRWM50200
2100580	2-piece collapsible frame only. Works with D3000, DHR, DHRHC, DHRUS50150 hose reels
2100375	Kit, Cart for D3000 and DHR hose reels
2100012	Ball valve and gauge sewer jet kit



GP Companies, Inc

1174 Northland Drive, Mendota Heights, MN 55120

Phone: 651.686.2199 Fax: 800.535.1745

www.generalpump.com email: sales@gpcompanies.com

facebook.com/gpcompanies

youtube.com/user/GeneralPump



General Pump is part of
the Interpump Group, the
world leader in plunger pumps.