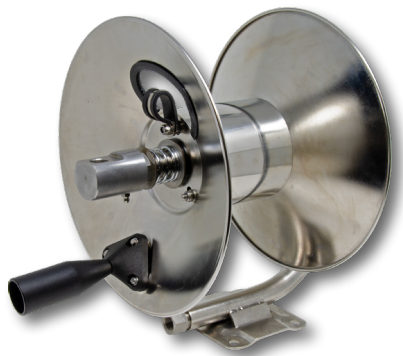


GENERAL PUMP *A member of the Interpump Group*

D30001SS & D30002SS

Hose Reels



SPECIFICATIONS

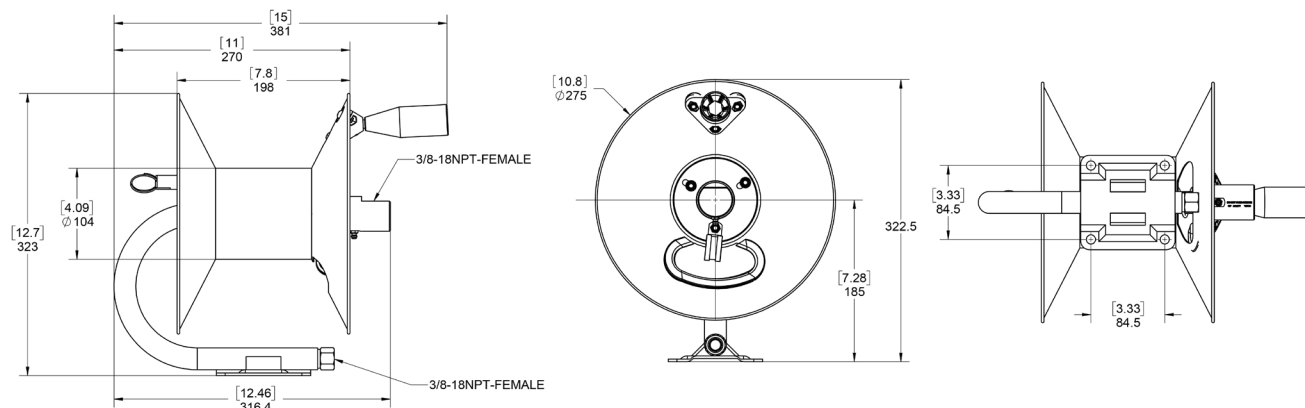
PART NUMBER	D30001SS	D30002SS
3/8" Hose Capacity	50 ft.	100 ft.
Pressure Rating	4000 PSI	
Inlet	3/8" NPT-F	
Outlet	3/8" NPT-F	
Max. Temp	250° F	

FEATURES / BENEFITS

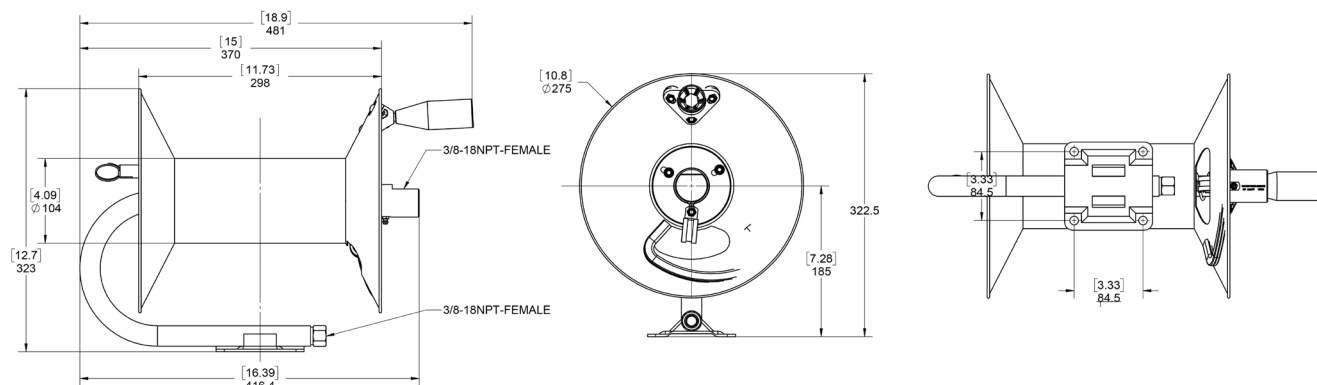
- Direct hand-crank rewind with locking pin
- Solid stainless steel construction
- Stainless steel swivel with internal ball bearings

DIMENSIONS (in/mm)

D30001SS



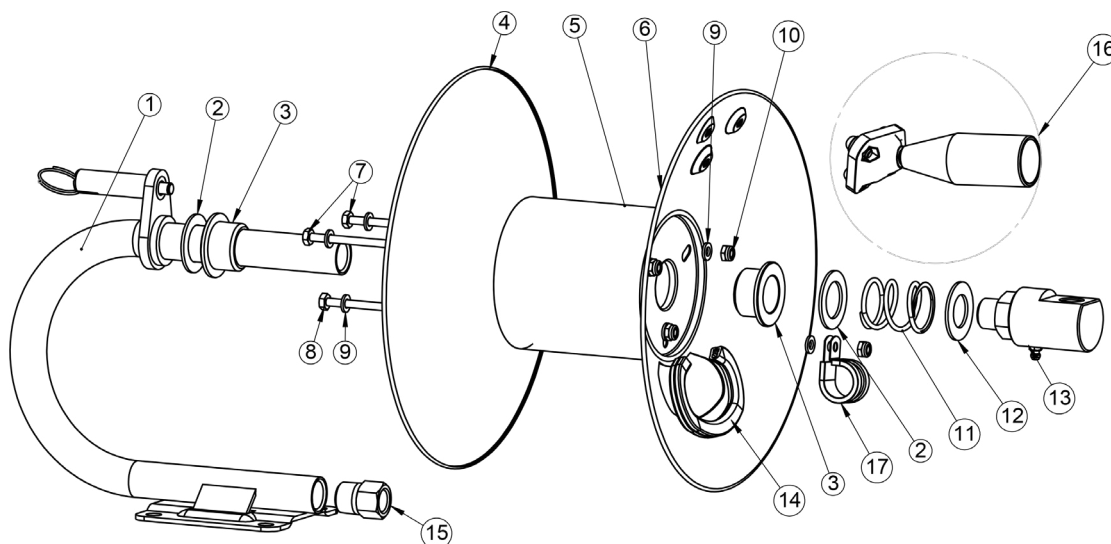
D30002SS



General Pump
is a member of
the Interpump Group

Ref 301174 Rev A
03-25



PARTS LIST

No.	Part No.	Description	Qty.
1	2103352S	Base Assy., Mounting, 50'	1
	2103353S	Base Assy., Mounting, 100'	1
2	2203420S	Washer, Swivel, SS	2
3	2660372	Bushing, Hose Reel	2
4	2540147S	Flange, Inlet, SS	1
5	2540144S	Sleeve, 50', SS	1
	2540145S	Sleeve, 100', SS	1
6	2540148S	Flange, Outlet, SS	1
7	2200133S	Bolt, HHCS, M6x111, SS, 50'	2
	2200135S	Bolt, HHCS, M6x211, SS, 100'	2

No.	Part No.	Description	Qty.
8	2200134S	Bolt, HHCS, M6x118, SS, 50'	1
	2200136S	Bolt, HHCS, M6x218, SS, 50'	1
9	2200018	Washer, M6	7
10	2200026	Nut, M6	4
11	2720032S	Spring, SS	1
12	2203421S	Washer, Swivel, SS	1
13	DSW1238SS	Swivel, SS	1
14	2660373	Guard, Hose	1
15	2520227	Adapter, 1/2NPT-Mx3/8NPT-F, SS	1
16	2100043	Handle	1
17	2540078	Clamp, Hose, 3/8"	1

ASSEMBLY INSTRUCTIONS

1. Connect the handle to the flange. Nuts go on the handle side of the flange.
2. Use (4) 3/8" or 10 mm bolts when securing the hose reel to a fixture. (Mounting Hardware Not Provided).
3. Use thread sealant (not provided) on inlet threads and outlet hose (not provided).
4. Connect the supply hose from the pressure washer unit to the inlet bushing on the base of the hose reel.
5. Feed the discharge hose through the opening in the flange of the hose reel and connect to the outlet elbow.
6. Clamp the hose grip to the hose on the extended stud in the opening of the flange and tighten down with nut and washer.
7. The hose reel is ready for operation.

SAFETY PRECAUTIONS & WARNINGS

1. Make sure incoming pressure does not exceed the rated pressure.
2. Use proper eye protection when assembling and using the hose reel.
3. Assemble the hose reel on a clean workbench free of debris and moisture.
4. Use soap and water when checking for air leaks.
5. Keep children away from work area.

WARNING: High Pressure Systems require a primary pressure regulating device (i.e. regulator, unloader) and a secondary pressure relief device (i.e. pop-off valve, relief valve). Failure to install such relief devices properly could result in personal injury or damage to pump or property. GP does not assume any liability or responsibility for the operation of the user's high pressure system.

WARNING!

Exposure of skin directly to pressurized air or fluids could result in severe bodily injury!