

GENERAL PUMP *A member of the Interpump Group*

Chemical Injector

Color-coded Chemical Injector - Stainless Steel

FEATURES

- Designed specifically for car wash applications
- Color-coded for easy identification
- GP's most chemical resistant injector
- Made in the USA
- A cost effective solution to your chemical application needs
- Optional metering tips available (100781)



(100336RD)

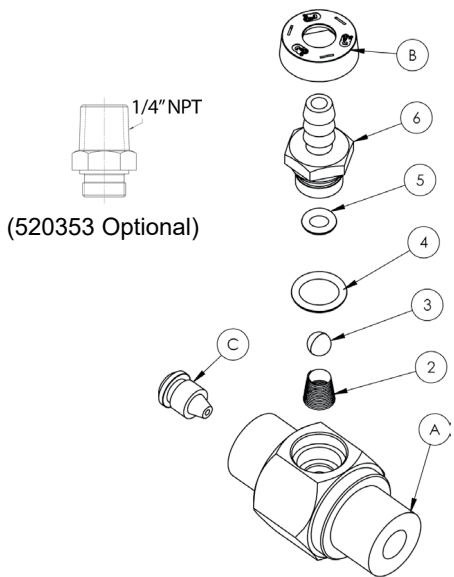


(100541GY)

SPECIFICATIONS

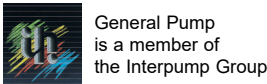
Model	100336RD	100094WT	100835OR	100334GY	100333BL	100339LG	100541GY	101176BL	101010DG
Orifice	1.45 mm	1.6 mm	1.8 mm	2.1 mm	2.2 mm	2.3 mm	2.1 mm	2.18 mm	3.18 mm
Style	FIXED								
Operating Pressure	5500 PSI								
Flow Range (GPM)	1 - 2	2 - 3	2 - 3	2 - 4	3 - 5	5 - 8	3 - 5	3 - 5	8 - 10
Max. Temperature	190° F								
Port Sizes	Inlet: 3/8" NPT-M								
	Discharge: 3/8" NPT-M								
	Chemical Port: 1/4" Hose Barb (100541GY & 101176BL have 2)								
Weight	.4 lbs.								
Materials	316 Stainless Steel, Hastelloy, Ceramic, Aflas®/FEPM								

PARTS LIST



No.	Part No.	Description	QTY.
A	"ITEM A"	Body, Injector, SS, See Table	1
2*	720038	Spring, Conical, .437 FL, Hastelloy	1
3*	640002	Ceramic Ball 7/32"	1
4*	701107	O-ring, .364 ID x .070 CS, Aflas	1
5*	701104	O-ring, .176 ID x .070 CS, Aflas	1
6*	520122	Hose Barb, Injector, Threaded, SS	1
B*	"ITEM B"	Cap, Injector, Color Coded, See Table	1
C	"ITEM C"	Nozzles, Injector, SS, See Table	1
9	800041	Thread Sealant, Red, 10K PSI	A/R
10	800004	Primer, Anaerobic Thread Sealant	A/R
*	K320	Repair Kit	
	100781	Metering Tips, Optional	
6	520353	Adapter, Optional, 1/4" NPT-M	

Optional check valve not included - Customer must add



Chemical Injector

Color-coded Chemical Injector - Stainless Steel

GENERAL PUMP *A member of the Interpump Group*

PARTS LIST TABLE

Part Number	"ITEM A" P/N	BODY HOLE DIA.	"ITEM B" HOSE BARB P/N	HOSE BARB COLOR	"ITEM C" NOZZLE P/N	NOZZLE DIA.
100094WT	520120	.076	2660442WT	WHITE	520075	.063
100333BL	520119	.116	2660442BL	BLUE	520065	.086
100334GY	520119	.116	2660442GY	GREY	520066	.083
100336RD	520120	.076	2660442RD	RED	520072	.057
100339LG	520121	.150	2660442LG	LT GREEN	520073	.098
100835OR	520119	.116	2660442OR	ORANGE	520116	.070
101010DG	520121	.150	2660442DG	DK GREEN	520373	.125
100541GY	520123	.116	2660442GY	GREY	520066	.083
101176BL	520123	.116	2660442BL	BLUE	520065	.086

INSTALLATION

This product is to be used with clean, fresh water. For different or corrosive liquids, contact GP Technical Service Department. With not clean liquids, appropriate filtration should be installed. Select the injector based on the nominal operating rating: system rated pressure, max flow and max temperature. Install valve with direction arrow pointing downstream. For proper operation a control device such as a dual lance wand, quick couple nozzles, or an adjustable nozzle holder must be used to lower the system pressure at the nozzle.

Under no circumstances should the pressure of the system exceed the maximum rated pressure of any component.

TROUBLESHOOTING

PROBLEM	CAUSE	SOLUTION
Injector will not draw liquid	Incorrect nozzle System is not in low pressure mode Discharge hose is too long Chemical line is clogged	Check and change nozzle Change or adjust nozzle to put system in low pressure mode Reduce length of discharge hose or change injector* Clear chemical line of obstruction
Rate of draw seems too slow	Discharge hose is too long Air leak in chemical line Chemical is too viscous	Reduce length of discharge hose or change injector* Locate and repair leak Reduce chemical with water to decrease its viscosity
Chemical injector is leaking from hose barb	Obstruction in hose barb check valve Damaged o-ring in check valve	Disassemble and remove obstruction Remove and replace o-ring
Excessive pressure load on pump, motor or engine	Clogged injector Improperly sized injector orifice	Clear injector orifice of obstruction Change orifice*

*Contact GP Technical Service for Assistance

WARNING: High Pressure Systems require a primary pressure regulating device (i.e. regulator, unloader) and a secondary pressure relief device (i.e. pop-off valve, relief valve). Failure to install such relief devices properly could result in personal injury or damage to pump or property. GP does not assume any liability or responsibility for the operation of the user's high pressure system.

