

**GENERAL PUMP** *A member of the Interpump Group*

# GP FLOW SWITCH

**TMT Flow Switch With Pilot Feature**

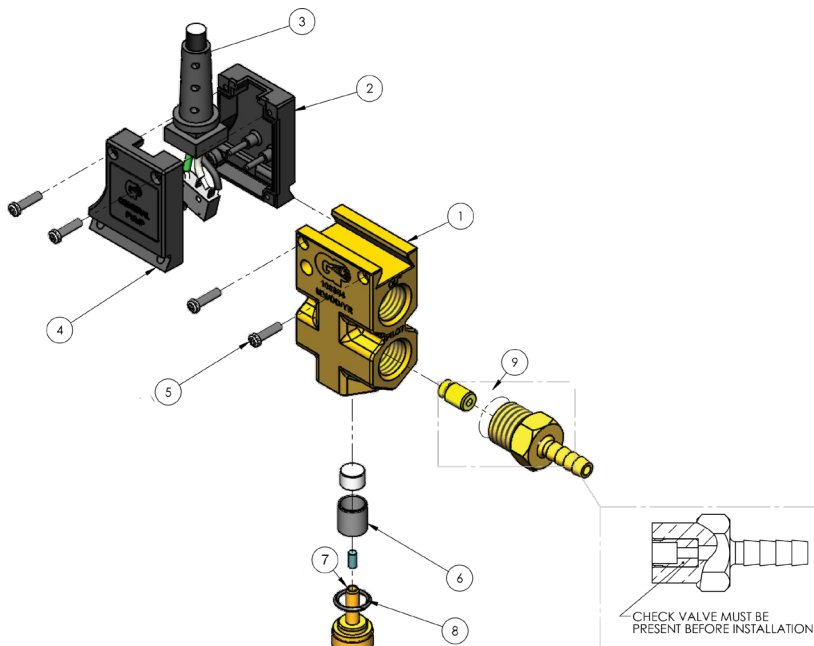
## FEATURES

- Micro-switch technology eliminates reed switch
- Activates with as little as .5 gpm flow
- Minimal pressure drop up to 12 gpm flow
- Mount in vertical position

## SPECIFICATIONS

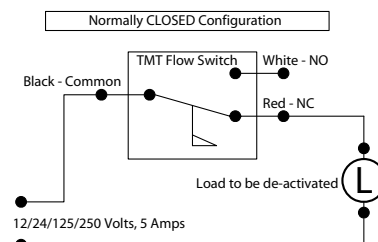
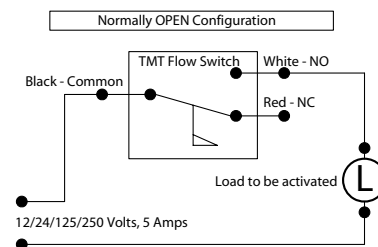
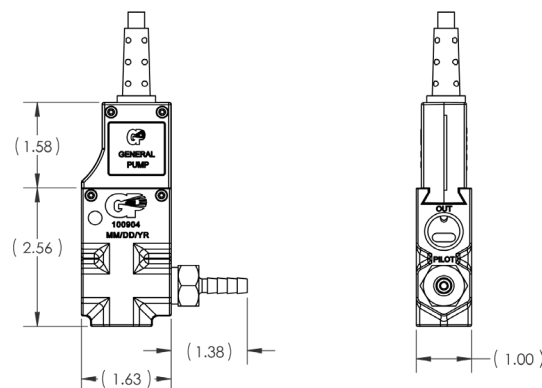
<b>Part Number</b>	<b>With Pilot</b>	<b>100879</b>
	<b>Without Pilot</b>	<b>100904</b>
<b>Maximum Operating Pressure</b>		4000 PSI
<b>Minimum Flow Required for Activation</b>		0.5 GPM @ 50 PSI
<b>Maximum Operating Flow</b>		12.0 GPM
<b>Operating Temperature Range</b>		40 - 180° F
<b>Electrical Lead Length</b>		48" - 18AWG
<b>Switch Ratings</b>	Max Switching Voltage	250 VAC
	Max Switching Current	5 AMPS
	Resistance with Leads	30 OHM
	Electrical Service Life	200,000 Cycles
	Mechanical Service Life	10,000,000 Cycles
<b>Ports</b>	Inlet	3/8" x 18 NPT-F
	Outlet	3/8" x 18 NPT-F
	Pilot	1/4" Hose Barb
<b>Dimensions</b>		4.1" x 1.6" x 1.0"
<b>Weight</b>		1.3 LBS
<b>Materials</b>		Buna-N, Brass, Plastic, Nickel Plated Neodymium

## EXPLOSION



No.	Part No.	Description	Qty.
1	510383	Body	1
2	660157	Enclosure, Side A	1
3	103064	Cord, Assy.	1
4	660158	Enclosure, Side B	1
5	201006	Bolts, 4-20 x 1/2"	4
6	103075	Plunger, Assy.	1
7	103076	Plug, Assy.	1
8	70113	O-ring, .426 ID x .070 CS.	1
9	103073	Pilot Valve, 8 mm, Assy.	1

## DIMENSIONS AND SCHEMATIC



General Pump  
is a member of  
the Interpump Group



Ref 300524 Rev. G  
12-24



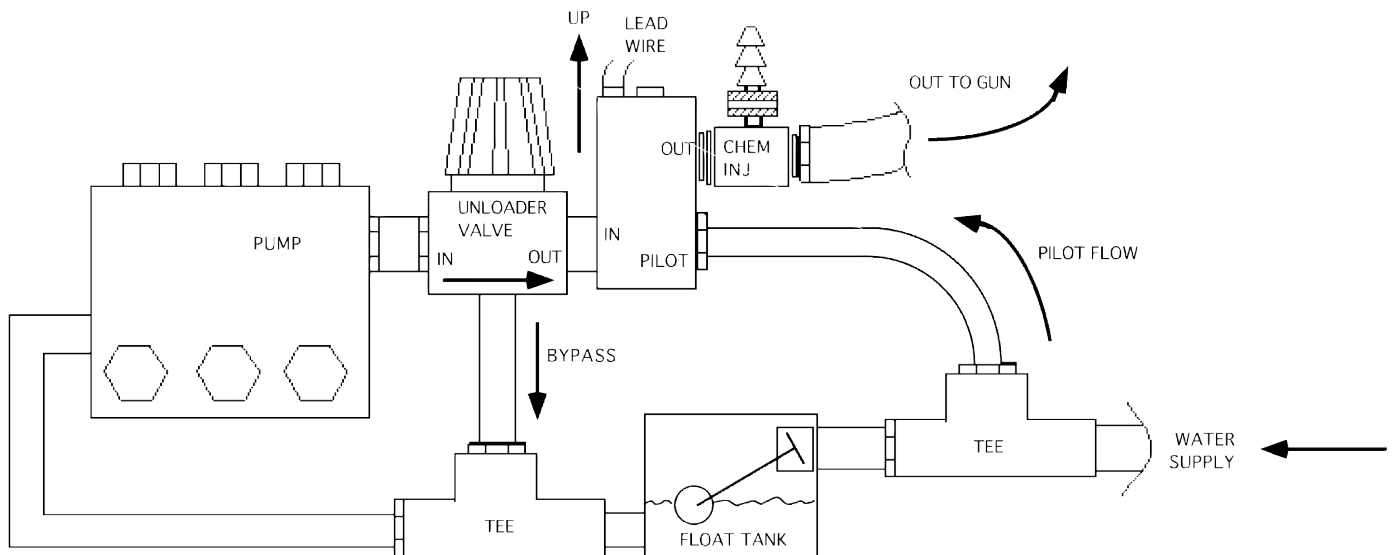
# GP FLOW SWITCH

TMT Flow Switch With Pilot Feature

GENERAL PUMP

A member of the Interpump Group

## INSTALLATION



**NOTE: When using this flow switch in a system containing a positive displacement pump, General Pump recommends the use of a pressure reducing device(s), correctly placed to protect all areas of the system.**

Install the flow switch **vertically** to the output side of the unloader, with the 2 conductor lead wires exiting from the top. If your system uses a downstream chemical injector, it should be mounted on the output side of the flow switch.

Model 100879, with pilot feature, requires a direct connection to the water supply feed line to provide a pilot signal. This is accomplished by installing a tee fitting (with a 1/4" hose barb fitting) directly in the water supply feed line. The tee must be installed before the float valve. Install an appropriate length of 1/4" I.D. reinforced polyvinyl tubing between the tee fitting and the valve pilot port.

**WARNING: High Pressure Systems require a primary pressure regulating device (i.e. regulator, unloader) and a secondary pressure relief device (i.e. pop-off valve, relief valve). Failure to install such relief devices properly could result in personal injury or damage to pump or property. GP does not assume any liability or responsibility for the operation of the user's high pressure system.**



WARNING: This product can expose you to chemicals including lead, which is known to the state of California to cause cancer and birth defects or other reproductive harm. For more information, go to [www.P65Warnings.ca.gov](http://www.P65Warnings.ca.gov)