

## GENERAL PUMP A member of the Interpump Group

# Mobile Clutch

## For 24mm Solid Shaft Pump

**Typical Mobile Clutch - Water Pump Applications** In typical water pump applications, the clutch is mounted on the input shaft of the water pump. Since the clutch has an integral pulley, a belt is used as the input to the clutch. This belt is normally driven directly from an electric motor or a gas/diesel engine. When there is no power to the clutch, the water pump does not engage; however when power is activated, the clutch drives the water pump to initiate water flow. In this application, the GP clutch is mounted directly to a General Pump by using an adapter plate.

Used in Carpet Cleaning, Texture Spray Machines, High Pressure Pump applications.



### SPECIFICATIONS

|                         |                           |            |
|-------------------------|---------------------------|------------|
| Pulley Size & Type      | 7" - A Groove, 24mm Shaft |            |
| Width                   | 2.25"                     |            |
| Torque After Burnishing | 75 - 95 lbs.              |            |
| Power Requirement:      | 12V                       | 47 Watts   |
|                         | 24V                       | 45.6 Watts |
| Weight                  | 8 lbs.                    |            |

| Part Number | Description             |   |
|-------------|-------------------------|---|
| 100687      | Clutch w/Mounting Plate | 47, 59(ES), 66 Series, 12V, Dual Groove               |
| 100688      | Clutch w/Mounting Plate | 44, 50, 53(ET), 58(EP), 63 Series, 12V, Dual Groove   |
| 100719      | Clutch w/Mounting Plate | 47, 59(ES), 66 Series, 24V, Dual Groove               |
| 100720      | Clutch w/Mounting Plate | 44, 50, 53(ET), 58(EP), 63 Series, 24V, Dual Groove   |
| 100717      | Clutch w/Mounting Plate | 47, 59(ES), 66 Series, 12V, Single Groove             |
| 100718      | Clutch w/Mounting Plate | 44, 50, 53(ET), 58(EP), 63 Series, 12V, Single Groove |

### Reasons for using an Electromagnetic Clutch

- Reduced horsepower consumption from the engine
- Less Cost
- Operator convenience
- Extended pump life
- Simple installation
- Cold weather starting

### General Pump Mobile Clutch Design Advantages

- **Solid forged rotor.** A one-piece solid forged rotor means no chance of internal parts separation. They have an even wall thickness around the coil which gives optimum flux distribution, maximizing torque.
- **Different coil voltages available.** 12 volt is the most common; 24 volt clutches are also available.
- **High temperature, longer-life grease.** Our special long-life grease has shown a significant improvement in life over other standard high temp greases.
- **E-coating.** Where possible, all parts in the clutch are e-coated to give maximum corrosion protection.
- **High-temperature epoxy coil.** To help prevent failure from vibration and outside contaminants, all coils are sealed in the coil shell with a high-temperature epoxy coating.
- **Forged machined pulley.** All GP models use a heavy-duty machined pulley. A stronger pulley resists damage due to abusive environments.
- **Clutches are also available mounted on a General Pump. Please contact your sales representative.**

# Mobile Clutch

For 24mm Solid Shaft Pump



## DIMENSIONS

Fig. 1

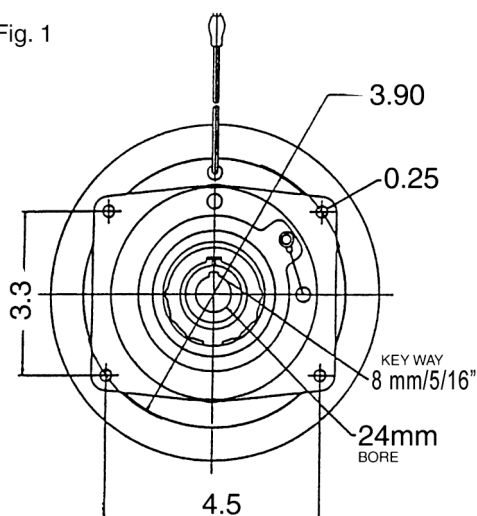


Fig. 2

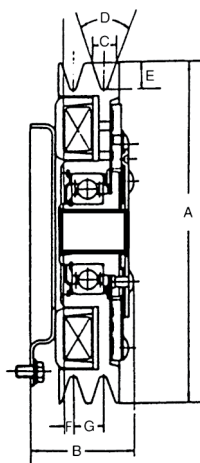
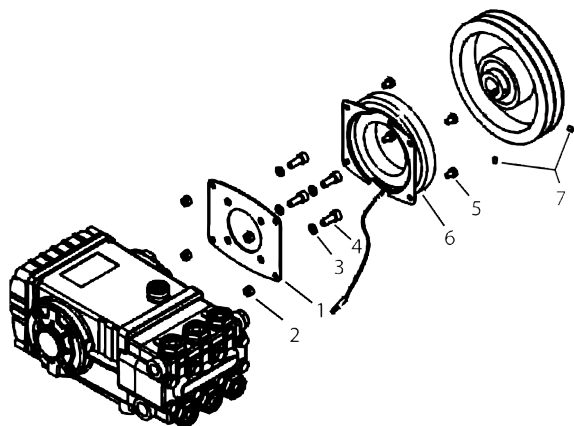


Fig. 2 Dimensions

|   |         |
|---|---------|
| A | 7"      |
| B | 2.08"   |
| C | 0.5"    |
| D | 36 Deg. |
| E | 0.56"   |
| F | 0.19"   |
| G | 0.62"   |

## PARTS LIST



| No. | Part No. | Description                                 | Qty. |
|-----|----------|---|------|
| 1   | 540047   | Adapter Plate, 47, 59, 66 Series            | 1    |
|     | 540048   | Adapter Plate, 44, 50, 58, 63 Series        | 1    |
| 2   | 203201   | Nut, Nylon                                  | 4    |
| 3   | 96701400 | Washer, 47, 59, 66 Series                   | 4    |
|     | 203510   | Washer, 44, 50, 58, 63 Series               | 4    |
| 4   | 200046   | Socket, Capscrew, 47, 59, 66 Series         | 4    |
|     | 200005   | Socket, Capscrew, 44, 50, 58, 63 Series     | 4    |
| 5   | 201004   | Socket, Capscrew                            | 4    |
| 6   | 103053   | Clutch, 2-groove, 12V                       | 1    |
|     | 103054   | Clutch, 2-groove, 24V                       | 1    |
|     | 103048   | Clutch, 1-groove, 12V                       | 1    |
| 7   | 200051   | Set Screw, Knurled Cup Point, M5 x .8 x 6mm | 2    |
| **  | 100163   | OPTIONAL Clutch Alignment Tool              |      |

**\*\* Clutch Coil must be mounted concentric to Pump Shaft to avoid damage. Utilize optional tool 100163. Verify Clutch Pulley does NOT contact Clutch Coil prior to operation.**

**WARNING: High Pressure Systems require a primary pressure regulating device (i.e. regulator, unloader) and a secondary pressure relief device (i.e. pop-off valve, relief valve). Failure to install such relief devices properly could result in personal injury or damage to pump or property. GP does not assume any liability or responsibility for the operation of the user's high pressure system.**



WARNING: This product can expose you to chemicals including lead, which is known to the state of California to cause cancer and birth defects or other reproductive harm. For more information, go to [www.P65Warnings.ca.gov](http://www.P65Warnings.ca.gov)