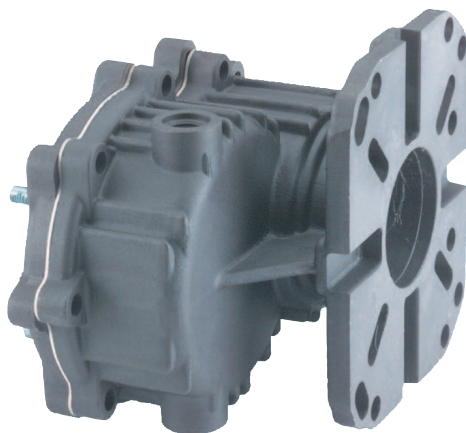


GENERAL PUMP *A member of the Interpump Group*

ZGR1000 & ZGR1125

Gear Reducer for Gas Engines

SPECIFICATIONS

Model #	ZGR1000	ZGR1125
Maximum BHP (Engine HP)	10 (18)	
Maximum Engine RPM	3200	
Reduction Ratio	2.2:1	
Maximum Pump Speed	1450 RPM	
Oil Capacity (SAE 90W hypoid gear lube)	9.5 oz.	
Weight	10 lb.	
Fits Engine Shaft Diameter	1 inch	1-1/8 inch
Maximum Shaft Extension	3-1/2 inches	
Fits General Pump Models	TS821, TS921, TS1011, TS1021, TS1311, TS1321, TS1331, TS1511, TS1521, TS1621 TS1711, TS2011, TS2021	
NOTE: This reducer fits engines with (4) 5/16-24 threaded holes on a 3.62 diameter bolt circle and engines with (4) 3/8-16 threaded holes on a 6.50 diameter bolt circle.		
Reference: See SAE specification J609A for additional information on engine mounting dimensions.		

FEATURES

- Eliminates need for belts and pulleys. Saves time and money.
- Compact design for easier enclosure. Reduced size of mounting base.
- Oversized bearing system is self-aligning. Reduces load on motor bearings and pump bearings.
- Self-contained lubrication system
Uses 90W gear lube for quiet, long life operation.
Protects pump from failure due to gearbox oil loss.
Protects gearbox from failure due to oil loss in pump.
- Large, helical cut, hardened steel gears for quiet, long life operation.
- Large capacity crankcase.
- Reversible mounting for right or left hand drive gas engines. Includes reversible dipstick and oil level sight glass.
- Model ZGR1000 for 3/4" keyed shaft.
- Model ZGR1125 for 1-1/8" keyed shaft.



General Pump
is a member of
the Interpump Group



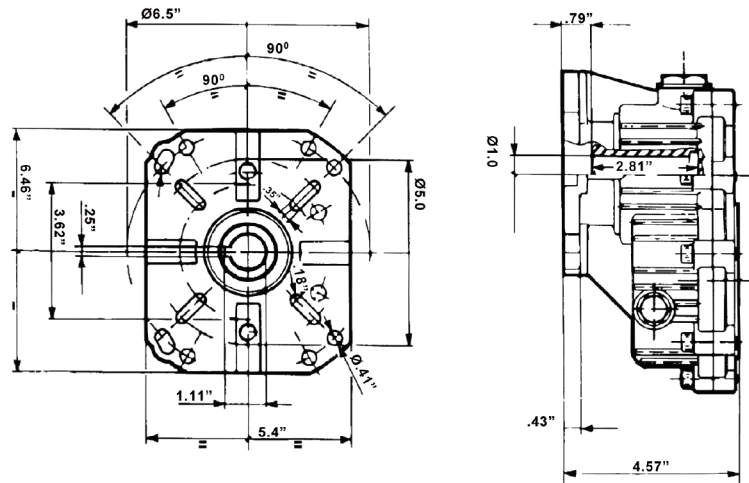
ZGR1000 & ZGR1125

Gear Reducer for Gas Engines

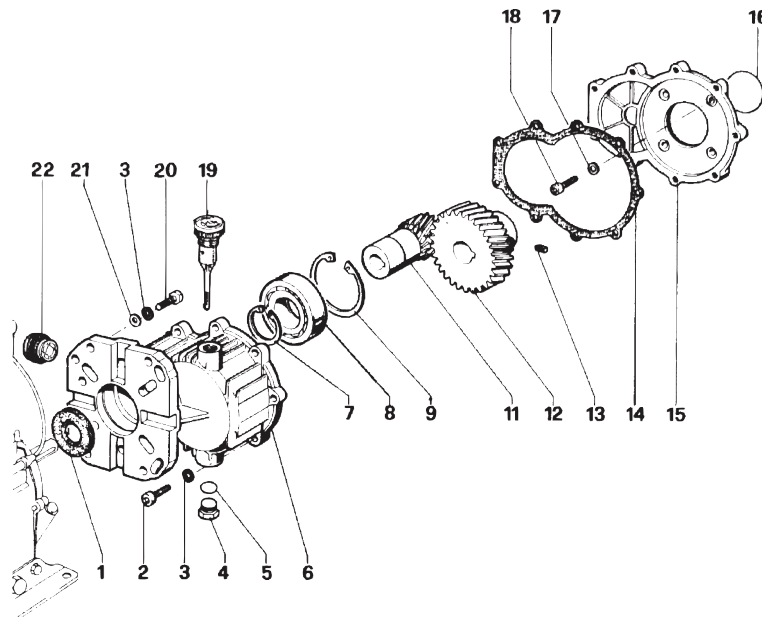
GENERAL PUMP

A member of the Interpump Group

DIMENSIONS



PARTS LIST



NO.	PART #	DESCRIPTION	QTY.	NO.	PART #	DESCRIPTION	QTY.
1.	90168000	Seal, Oil	1	13.	99301700	Screw, M8x10	1
2.	99308400	Screw, M8x30	9	14.	10023284	Gasket	1
3.	96701400	Washer, 5/16"	13	15.	10023022	Adapter, Flange	1
	96710400	Washer, 3/8"	4	16.	90389800	O-ring, 2.237x.103	1
4.	98210000	Cap, 3/8"-19 BSP	1	17.	93175400	Washer, M8.51	4
5.	90383300	O-ring, .549x.103	1	18.	99308500	Screw, M8x30	4
6.	10022922	Box, Reducer	1	19.	98210600	Oil Dip Stick	1
7.	90072500	Ring, Retaining	1	20.	99275500	Screw, 5/16"	4
8.	91851800	Bearing, Ball	1		99334500	Screw, 3/8"	4
9.	90097600	Ring, Retaining	1	21.	96702000	Washer	4
11.	10027155	Gear, Pinion, 1-1/8"	1	22.	97596800	Indicator, Oil Level	1
	10023355	Gear, Pinion, 1"	1				
12.	10023455	Gear, Ring	1				

Optional

* 190159 Mounting Kit

GENERAL PUMP 1174 Northland Drive • Mendota Heights, MN 55120

Phone: 651.686.2199 • Fax: 800.535.1745 • e-mail: sales@gpcompanies.com • www.generalpump.com

Ref 300129 Rev. D
12-09

