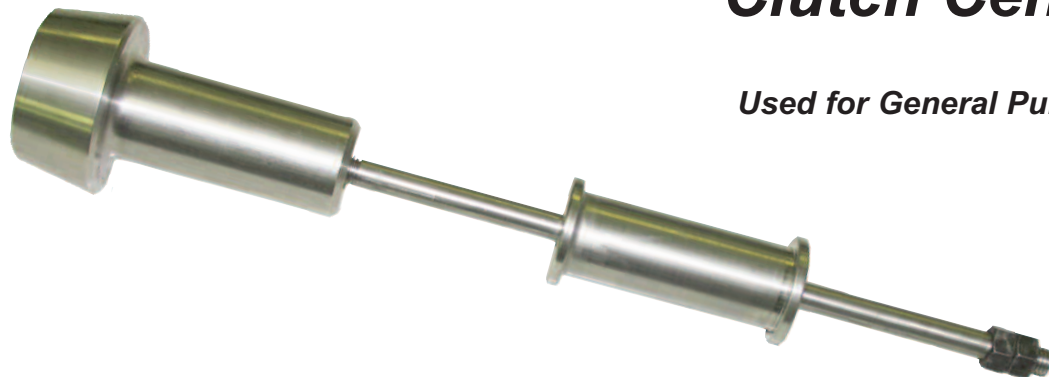


100163 Clutch Centering Tool

Used for General Pump Clutch Assemblies

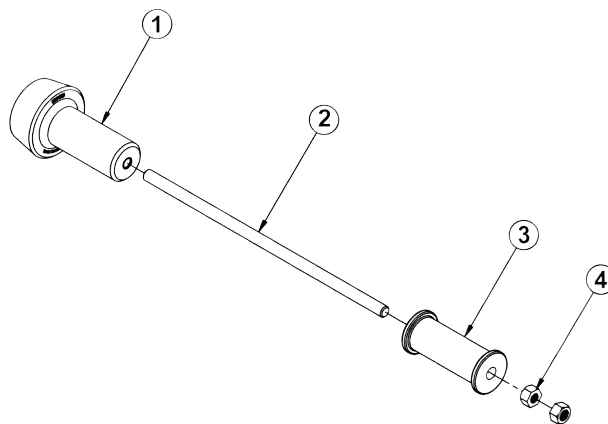
**100687, 100688,
100717, 100718,
100719, 100720**



Clutch Part #	Description	Pump(s)
100687	12 Volt Double Groove Clutch Adapter Kit	47 Series
100688	12 Volt Double Groove Clutch Adapter Kit	44, 50 and 63 Series
100717	12 Volt Single Groove Clutch Adapter Kit	47 Series
100718	12 Volt Single Groove Clutch Adapter Kit	44, 50 and 63 Series
100719	24 Volt Double Groove Clutch Adapter Kit	47 Series
100720	24 Volt Double Groove Clutch Adapter Kit	44 and 50 Series

PARTS LIST

Item	Part #	Description	Qty.
1	520297	Clutch Assy. Tool	1
2	520299	Rod	1
3	520298	Slide	1
4	638042	1/2-13 Nut	2



General Pump
is a member of
the Interpump Group



INSTALLATION INSTRUCTIONS

1. Remove four bolts from pump side cover. Remove cover and discard. Mount adapter plate to pump, with fins towards the pump, using the four bolts previously removed. Apply blue Loctite 243 (or equivalent) to the threads of the four bolts and torque to 7.3 ft./lbs. (Ref.)

2. Mount clutch coil portion of clutch assembly to adapter plate with supplied bolts and nylock nuts. Leave loose.

NOTE: Clutch wire to be oriented to the bottom of the pump.

3. Place centering tool over pump shaft ensuring slot on tool is aligned with key.

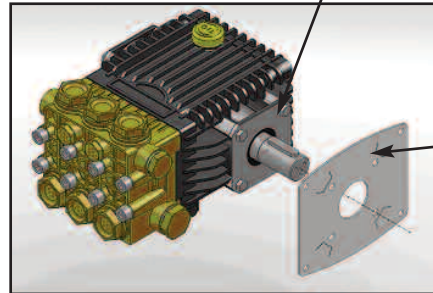
4. Use minimum required amount of force, tapping if required, to center coil about shaft.

5. With tool still in place, tighten four coil mounting bolts until secured.

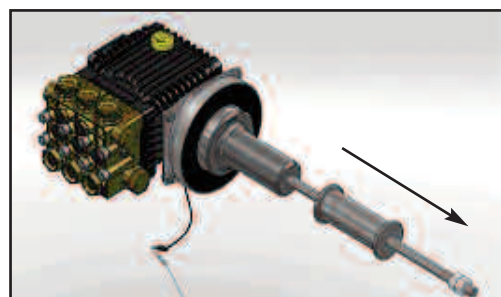
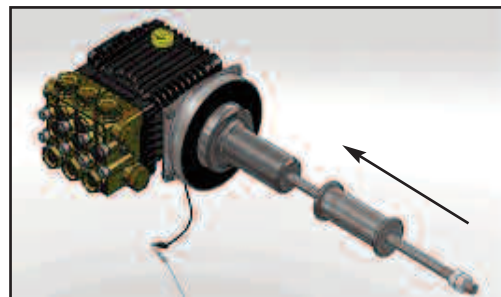
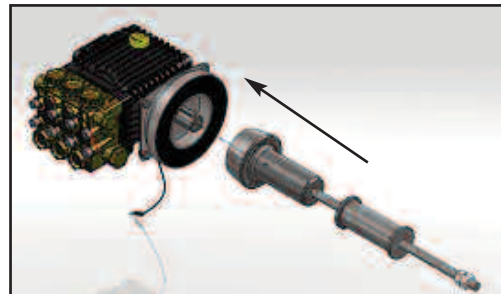
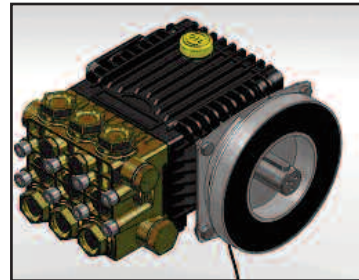
6. Remove tool by pulling off or using slide if required.

7. Apply anti-seize to pump shaft. Mount clutch pulley to pump shaft using set screws. Apply Loctite 243 (or equivalent) to set screws, torque to 50 in./lbs. (Ref.)

Remove side cover



Adapter Plate



Ref 300752 Rev. A
04-10