

**GENERAL PUMP** *A member of the Interpump Group***YVS280SS**

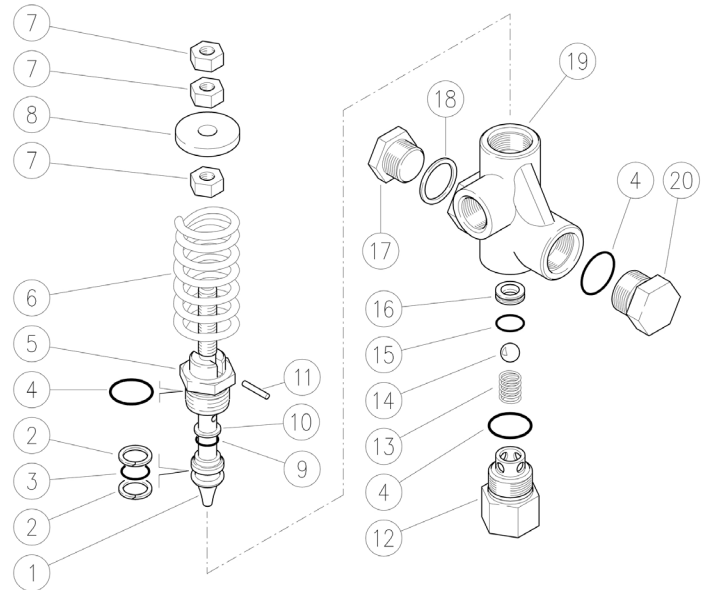
Unloader Valve

**SPECIFICATIONS**

<b>Part Number</b>	<b>YVS280SS</b>	
<b>Maximum Flow</b>	21 GPM	
<b>Maximum Discharge Pressure</b>	4050 PSI	
<b>Maximum Temperature</b>	158 °F	
<b>Port Sizes:</b>	<b>Inlet</b>	1/2" BSP-F
	<b>Outlet</b>	1/2" BSP-F
	<b>Bypass</b>	1/2" BSP-F
<b>Dimensions</b>	5.29" x 3" x 2.3"	
<b>Shipping Weight</b>	2.72 lbs.	
<b>Materials</b>	Stainless Steel, Plastic, Viton	

**PARTS LIST**

Item	Part No.	Description	Qty.
1	Y60043260	Piston, M10, SS	1
2*	Y10401400	Back-up Ring, 18x13.5x1.2	2
3*	Y10317810	O-ring, 2.62x13.1	1
4*	Y10307210	O-ring, 1.78x20.35	3
5	Y60040460	Piston Holder, SS	1
6	Y60041161	Spring, Blue	1
7	Y11462750	Nut, M10, SS	3
8	Y60040631	Spring Holder	1
9*	Y10317410	O-ring, 2.62x9.93	1
10*	Y10401500	Back-up Ring, 10x14.5x1.2	1
11	Y15103200	Pin, 3x18, SS	1
12	Y60040560	Inlect Coupler, 1/2" BSP-F, SS	1
13	Y60041060	Spring, SS	1
14*	Y14746101	Ball, 13/32", SS	1
15*	Y10306010	O-ring, 1.78x12.42	1
16*	Y60040860	Seat, SS	1
17	Y60041351	Plug, 1/2" BSP, SS	1
18	Y14410100	Sealing Washer, 1/2 BSP	1
19	Y60043160	Housing, 1/2" BSP, SS	1
20	Y60055251	Plug, M24x1.5, SS	1
*	Y60059624	Repair Kit	



**WARNING: High Pressure Systems require a primary pressure regulating device (i.e. regulator, unloader) and a secondary pressure relief device (i.e. pop-off valve, relief valve). Failure to install such relief devices properly could result in personal injury or damage to pump or property. GP does not assume any liability or responsibility for the operation of the user's high pressure system.**



WARNING: This product can expose you to chemicals including lead, which is known to the state of California to cause cancer and birth defects or other reproductive harm. For more information, go to [www.P65Warnings.ca.gov](http://www.P65Warnings.ca.gov)



General Pump is  
a member of the  
Interpump Group.



**GENERAL PUMP** 1174 Northland Drive • Mendota Heights, MN 55120  
Phone: 651.686.2199 • Fax: 800.535.1745 • e-mail: [sales@gpcompanies.com](mailto:sales@gpcompanies.com) • [www.generalpump.com](http://www.generalpump.com)

Ref 301141 Rev. A  
06-23

