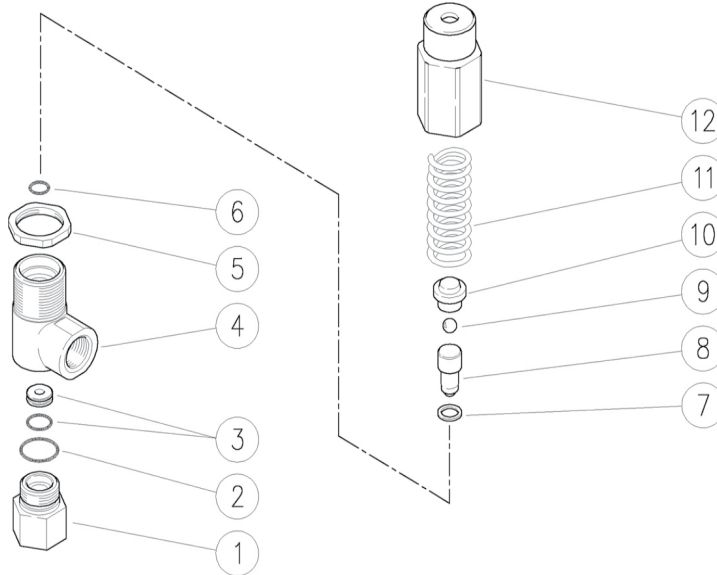


SPECIFICATIONS

Part Number	YBRV624D	YVBR631D
Flow Rate	6.3 GPM	
Max Pressure	2,400 PSI	3,100 PSI
Max Temperature	195° F	
Port Size: Inlet:	G3/8-19 BSPP-F	
Bypass:	G3/8-19 BSP-F (2)	
Weight	14.3 oz.	
Material	Brass, Stainless Steel, Buna-N	

PARTS LIST



No.	Part No.	Description	Qty
1	Y60030631	Fitting, Bypass, 3/8-19 BSPP-F	1
2*	Y10306600	O-ring, .614 x .070	1
3*	Y60051120	O-ring, .394 x .039 + Seat	1
4	Y60052635	Housing, Brass (2 Bypass Ports)	1
5	Y60052331	Ring Nut, M24 x 1.25	1
6*	Y10305500	O-ring, 1.78 x 7.66	1
7*	Y10402500	Backup Ring, 8 x 11 x 1.2	1

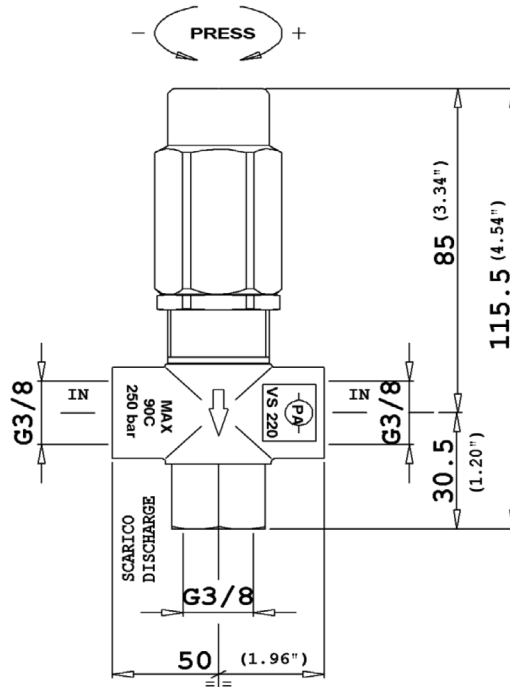
No.	Part No.	Description	Qty
8	Y60051421	Piston + Ball, 7/32"	1
9	Y14742150	Ball, 1/4"	1
10	Y60050331	Seat, Ball	1
11	Y60051661	Spring, 4.3 x 14.3 x 53 (YBRV631D)	1
	Y60050261	Spring, 4 x 14.5 x 53 (YBRV624D)	
12	Y60053231	Knob, Brass, M24	1
*	Y60053524	Repair Kit YBRV624	



General Pump
is a member of
the Interpump Group



DIMENSIONS



WARNINGS

WARNING: High Pressure Systems require a primary pressure regulating device (i.e. regulator, unloader) and a secondary pressure relief device (i.e. pop-off valve, relief valve). Failure to install such relief devices properly could result in personal injury or damage to pump or property. GP does not assume any liability or responsibility for the operation of the user's high pressure system.



WARNING: This product can expose you to chemicals including lead, which is known to the state of California to cause cancer and birth defects or other reproductive harm. For more information, go to www.P65Warnings.ca.gov