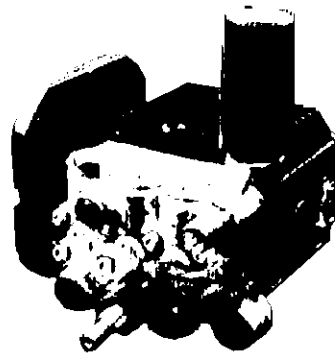
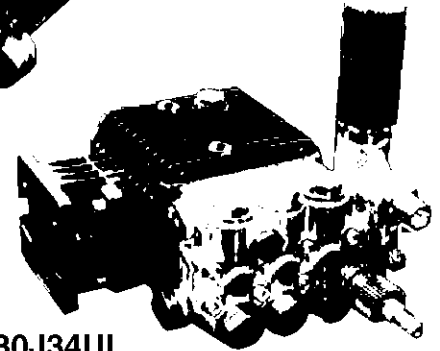


FEATURES

- Forged brass manifold with exclusive lifetime warranty
- New, over-sized connecting rods for ultimate crankcase performance
- Die cast, anodized aluminum, oil-bath crankcase
- Solid ceramic plungers with continuously lubricated packings
- The original Interpump unitized, stainless steel, K123 inlet and outlet valves
- Ideal for all general cleaning applications
- Comes standard with either SAE J609 gasoline engine mounting flange, or NEMA 56C mounting flange.*
- Also available in "L" left-handed versions



TP2530X34UI*



TP2530J34UI

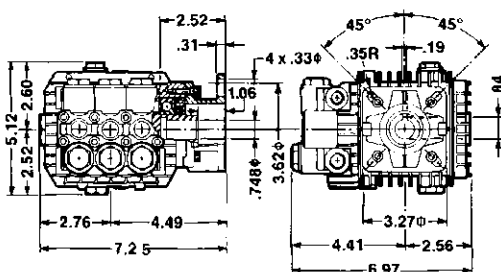
**To reduce time and save money in assembling GP pumps to gasoline engines, General Pump recommends that you purchase the TP2530X34 pump with a GP #640042, J609-to-56C Adapter Flange and GP #100320 Bolt Kit.*

SPECIFICATIONS

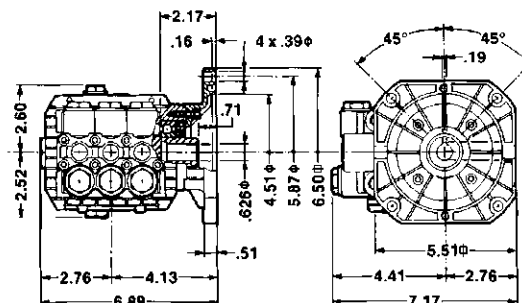
Pump Model	TP2530J34UI / TP2530X34UI
Maximum Volume	2.88 GPM
Maximum Discharge Pressure	2500 PSI
Rated Pump Speed	3400 RPM
Maximum Inlet Pressure	125 PSI
Maximum Inlet Vacuum	3 ft. water (2.6 in. Hg)
Bore	.591 in. / 15 mm
Stroke	.283 in. / 7.2 mm
Crankcase Oil Capacity	11.0 oz.
Maximum Fluid Temperature	165°F
Pump Inlet Port Thread	3/8-19 BSPP-F
Unloader Inlet Port Thread	1/2-14 BSPP-F*
Pump Discharge Port Thread	1/4-19 BSPP-F
Unloader Discharge Port Thread	M22
Hollow Shaft I.D.	3/4 in. / 19 mm
Weight	11.4 lbs.
Dimensions	7.0 x 7.2 x 5.5 in.

***DO NOT use NPT Inlet Fitting; GP 680006 Inlet Fitting is recommended.**

DIMENSIONAL DRAWING



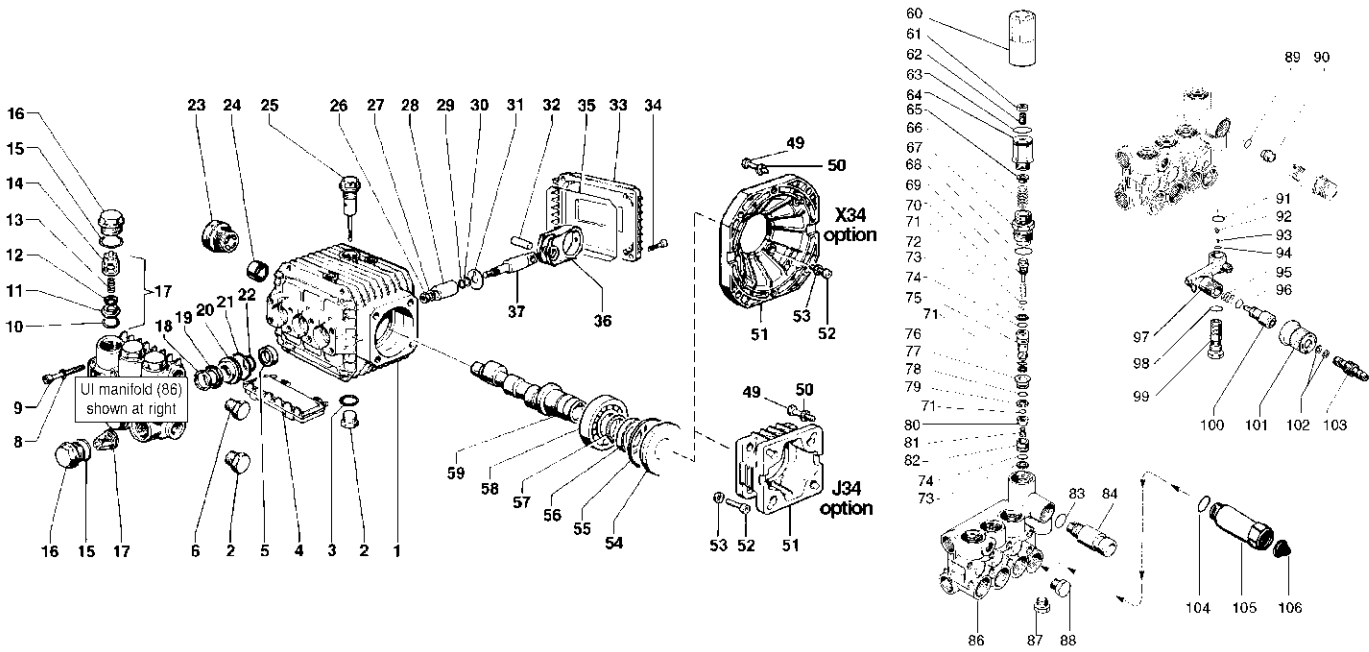
J34 Version



X34 Version

NOTE:
Overall height w/unloader=8"





PARTS LIST

ITEM	PART NO.	DESCRIPTION	KIT NO.	QTY.	ITEM	PART NO.	DESCRIPTION	KIT NO.	QTY.	ITEM	PART NO.	DESCRIPTION	KIT NO.	QTY.
1.	51.0106.22	Crankcase		1	36.	51.0301.22	Connecting Rod		3	78.	90.3589.00	O-Ring	102	1
2.	98.2100.00	Plug, 3/8		1	37.	51.0500.56	Plunger Rod		3	79.	90.5075.00	Back-up Ring	102	1
3.	90.3833.00	O-Ring		1	49.	99.2730.00	Screw, J34		4	80.	36.3190.66	Valve	102	1
4.	51.2091.02	Protector		1		99.3345.00	Screw, X34		4	81.	99.1509.00	Screw	102	1
5.	90.1565.00	Oil Seal	83	3	50.	96.7014.00	Washer, J34		4	82.	36.3164.66	Valve Seat	102	1
6.	98.2041.00	Plug, 1/4		1		96.7104.00	Washer, X34		4	83.	90.3832.00	O-Ring	94	1
8.	96.6938.00	Washer		8	51.	10.0346.22	Flange, J34		1	84.	10.0078.70	Nipple, 3/8 BSPP		1
9.	99.1943.00	Screw		8		10.0344.22	Flange, X34		1		10.0147.70	Nipple, M22		optional
10.	90.3841.00	O-Ring	123	6	52.	99.1867.00	Screw		4		10.0318.70	Nipple, 3/8 NPT		optional
11.	36.2003.66	Valve Seat	123	6	53.	96.6938.00	Washer		4	86.	51.1201.41	UI Manifold		1
12.	36.2001.76	Valve Plate	123	6	54.	50.2115.51	Spacer		1	87.	98.2057.00	Cap		1
13.	94.7376.00	Spring	123	6	55.	90.4097.00	O-Ring		1	88.	98.2041.00	Cap		1
14.	36.2025.51	Valve Cage	123	6	56.	90.1644.00	Oil Seal		1	89.	90.3822.00	O-Ring	94	1
15.	90.3847.00	O-Ring		6	57.	90.0667.00	Snap Ring		1	90.	10.0151.66	2 mm Nozzle		1
16.	98.2216.00	Valve Cap		6	58.	20.2835.21	Bearing		1	91.	90.3582.00	O-Ring	94	1
17.	36.7115.01	Valve Assy.	123	6	59.	51.0221.65	Crankshaft		1	92.	94.8217.00	Spring	94	1
18.	51.1000.51	Head Ring	96,97	3	60.	36.3187.51	Knob		1	93.	97.4782.00	Ball	94	1
19.	90.2620.00	Packing	96,97	3	61.	99.3068.00	Bolt, M8 x 25		1	94.	90.3572.00	O-Ring	94	1
20.	51.0800.70	Packing Retainer	86,96	3	62.	99.2223.00	Nut, M8		1	95.	94.7383.00	Spring	94	1
21.	90.3604.00	O-Ring	86,96,97	3	63.	90.3598.00	O-Ring, 20.35x1.78		1	96.	90.3580.00	O-Ring	94	1
22.	90.3835.00	O-Ring	86,96,97	3	64.	36.3185.70	Pressure Regulator		1	97.	36.3181.51	Body		1
23.	97.5968.00	Sight Gauge		1	65.	36.3169.70	Seat		1	98.	90.3585.00	O-Ring	94	1
24.	20.2128.35	Needle Bearing		1	66.	94.7436.00	Spring, 15 x 36		1	99.	36.2563.70	Valve Seat		1
25.	98.2103.00	Oil Dip Stick		1	67.	36.3184.70	Bushing		1	100.	36.2564.70	Shuttle		1
26.	92.2216.00	Nut		3	68.	90.3847.00	O-Ring	102	1	101.	36.2565.51	Knob		1
27.	96.7008.00	Washer		3	69.	36.3188.70	Stopper	102	1	102.	90.3570.00	O-Ring	94	2
28.	51.0400.09	Plunger (15 mm)		3	70.	94.7332.00	Spring	102	1	103.	36.2566.70	Coupling		1
29.	90.3572.00	O-Ring		3	71.	90.3575.00	O-Ring	102	3					
30.	90.5022.00	Back Up Ring		3	72.	97.4800.00	Ball	102	1					
31.	96.7070.00	Flinger Washer		3	73.	90.5065.00	Back-up Ring	102	2					
32.	97.7310.00	Conn. Rod Pin		3	74.	90.3822.00	O-Ring	102	2					
33.	51.1600.22	Crankcase Cover		1	75.	36.3189.70	Piston	102	1					
34.	99.1867.00	Screw		4	76.	90.5025.00	Back-up Ring	102	1					
35.	90.3917.00	Cover O-Ring		1	77.	36.3165.70	Valve Guide	102	1					

REPAIR KITS

KIT NO.	123	83	86	94	96	97	102
ITEM NO.s INCLUDED IN KIT	10, 11, 12, 13, 14, (17)	5	20, 21	83, 89, 91, 92, 93, 94, 95, 96, 98, 102	18, 19, 20, 21, 22	18, 19, 21, 22	67, 68, 69, 70, 71, 72, 73, 74, 75, 76, 77, 78, 79, 80, 81, 82
NUMBER OF ASSEMBLIES IN KIT	6	3	3	—	1	3	—
NUMBER OF CYLINDERS KIT WILL SERVICE	3	3	3	—	1	3	—

TORQUE SPECS*

Position	Ft.-lbs.
2	29.4
6	14.7
9	8.8
16	49.0
23	13.2
26	11.0
34	7.3
49	14.7
52	7.3

*Decrease torque by 20% if threads are lubricated.

